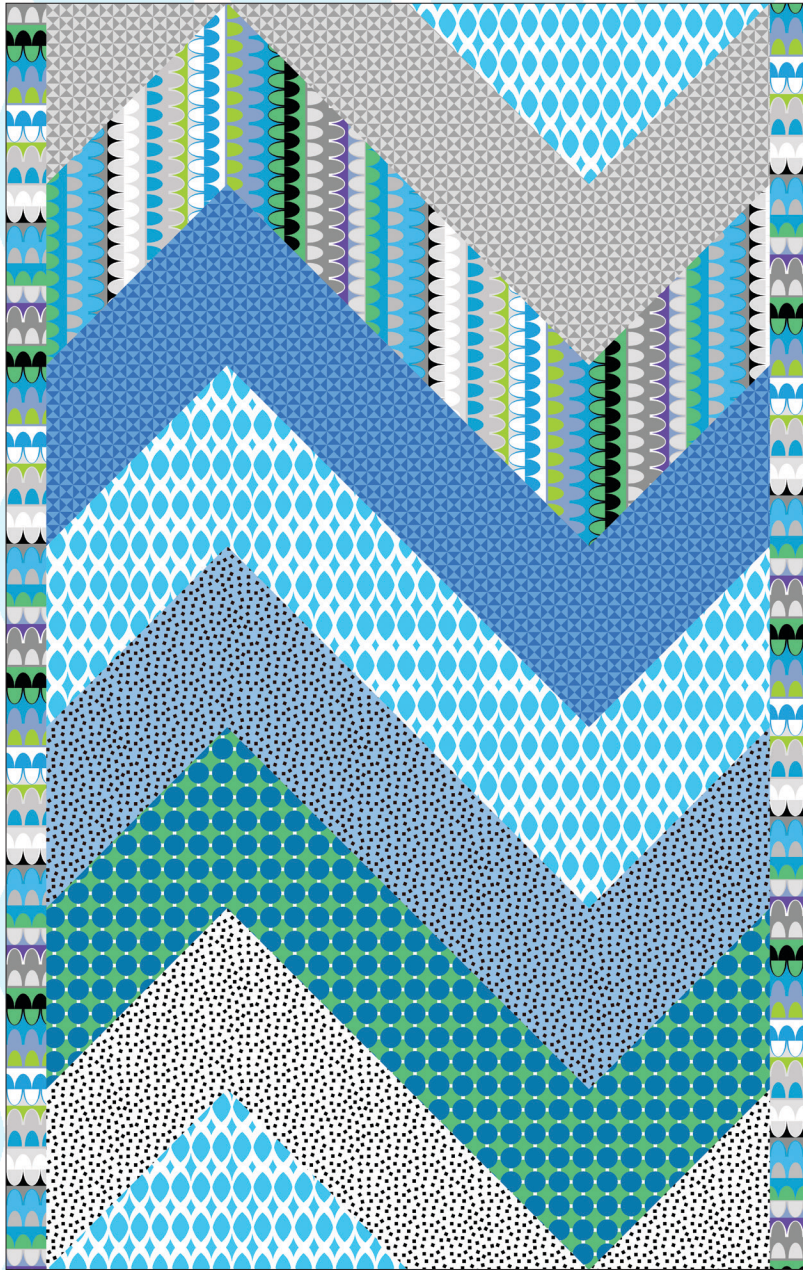


free pattern

# Waves

Finished size: 40" x 63"

Designed by Benartex Studio



The quilt shown is a digital representation. Actual fabric repeats may vary from design shown.

Tag us with your finished quilt!

#KanvasStudio #KanvasBenartex

#BenartexFabrics #Benartex #BenartexFabric

#ContempoStudio #ContempoFabrics



Collection used:


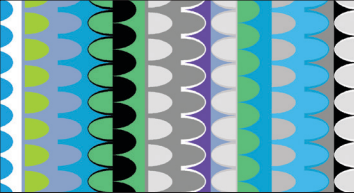





**GRIDWORK**  
by Christa Watson of Christa Quilts

# Waves

Finished size: 40" x 63"

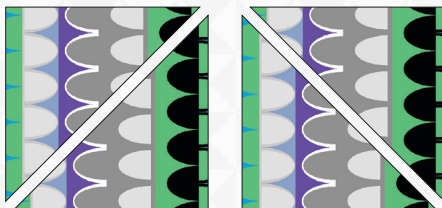
free pattern

## Cutting Chart

Sample	Description	QTY	CUT
	<b>A</b> 6816-08 Hourglass - Grey	1/3 yd	(3) 10" x 10" squares, cut once on diagonal to make (6) HST's.
	<b>B</b> 6813-84 Arches - Turquoise INCLUDES BINDING	1 yd	(4) 10" x 10" squares, cut once on diagonal to make (8) HST's. See Cutting Diagram. (4) 2 1/2 x WOF* strips; side borders. (6) 2 1/4 x WOF* strips; binding.
	<b>C</b> 6816-50 Hourglass - Blue	1/3 yd	(4) 10" x 10" squares, cut once on diagonal to make (8) HST's.
	<b>D</b> 6814-85 Diamond Ovals - Turquoise	2/3 yd	(6) 10" x 10" squares, cut once on diagonal to make (12) HST's. See Cutting Diagram.
	<b>E</b> 6818-52 Square Dots - Sky	1/3 yd	(4) 10" x 10" squares, cut once on diagonal to make (8) HST's.
	<b>F</b> 6815-82 Circle Grid - Caribbean	1/3 yd	(4) 10" x 10" squares, cut once on diagonal to make (8) HST's.
	<b>G</b> 6818-09 Square Dots - White	1/3 yd	(3) 10" x 10" squares, cut once on diagonal to make (6) HST's.

\* = Sew strips via short ends.    **WOF** = Width Of Fabric.    **HST's** = Half Square Triangles

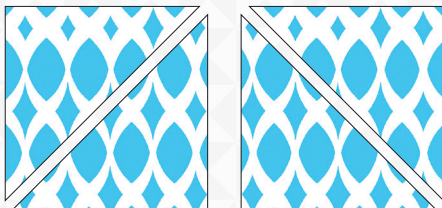
Fabrics B and D are DIRECTIONAL PRINTS, please follow this reference for cutting directions.



**B1**

**B2**

Cut (2) squares from top right to bottom left  
and (2) squares from top left to bottom right.



**D1**

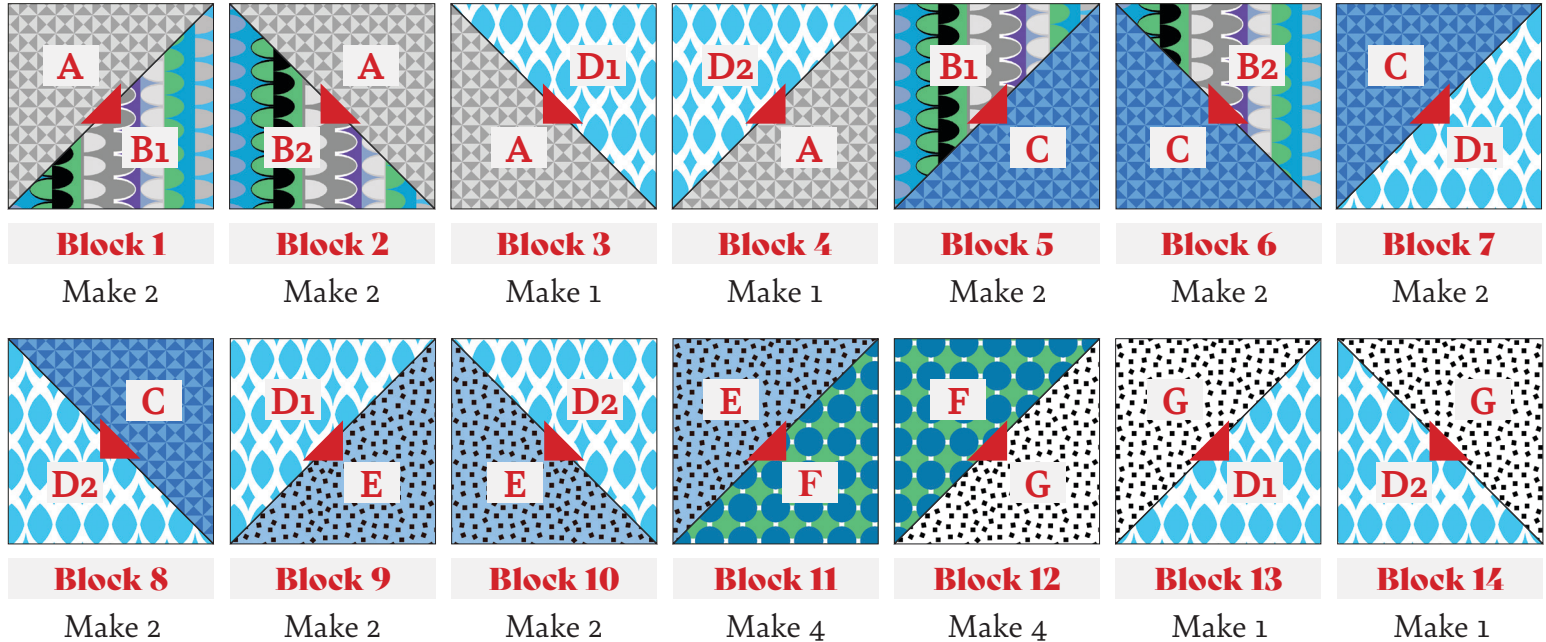
**D2**

Cut (3) squares from top right to bottom left  
and (3) squares from top left to bottom right.



## Block Assembly

1) Sew together 10" HST's following the **BLOCK** Diagrams below. Square **BLOCKS** to 9-1/2".



## Quilt Assembly

Refer to QUILT DIAGRAM for proper block placement and directions.

2) Sew blocks together into rows, then sew rows together.

Row 1: Block 1 + Block 2 + Block 3 + Block 4

Row 2: Block 5 + Block 6 + Block 2 + Block 1

Row 3: Block 7 + Block 8 + Block 6 + Block 5

Row 4: Block 9 + Block 10 + Block 8 + Block 7

Row 5: Block 11 + Block 11 + Block 10 + Block 9

Row 6: Block 12 + Block 12 + Block 11 + Block 11

Row 7: Block 13 + Block 14 + Block 12 + Block 12

## Border Assembly

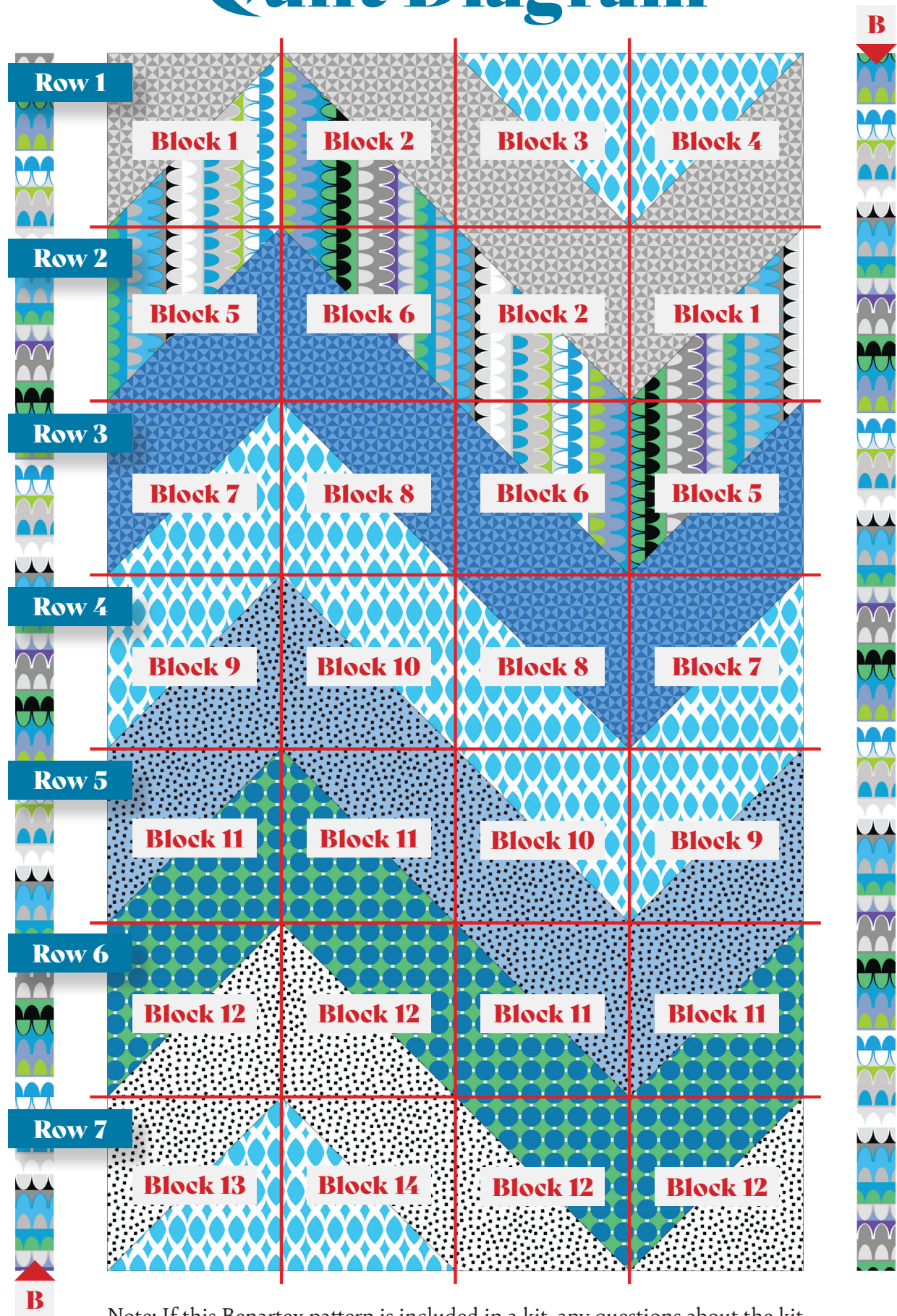
Measure sides of quilt top to ensure border cutting sizes. Below are our measurements.

3) Sew (1) **B** strip measuring 2-1/2" X (63-1/2") to each side of the quilt.

## Finishing

Cut batting and backing 3" larger than top on all sides. Layer backing, batting and top together and baste or pin. When quilting is completed, trim the excess batting and backing. Bind as usual.

# Quilt Diagram



Note: If this Benartex pattern is included in a kit, any questions about the kit should be addressed to the vendor from whom you bought it.