

# Sorbet

42"x53" quilt

## MATERIALS

**½ yard** each pink, orange and blue Magic Carpet prints (6996-1, 6996-22, 6996-50)

**¾ yard** each lavender and green Magic Carpet prints (6996-36, 6996-40)

**½ yard** blue Galaxy print for binding (6998-50)

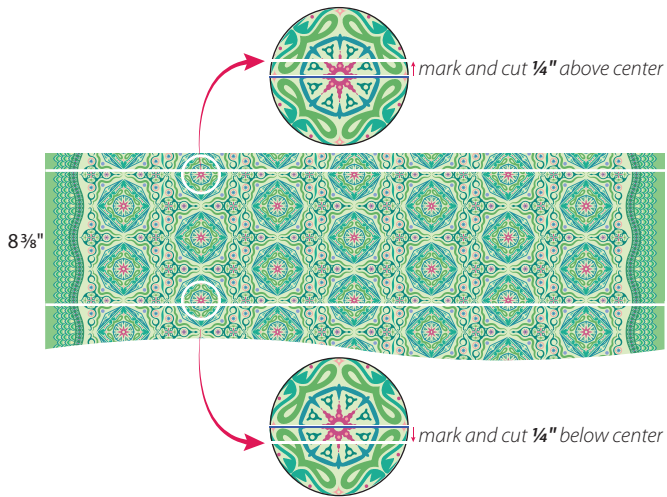
**1¾ yards** aqua Mirage print for backing (6997-24)

**46"×57"** batting

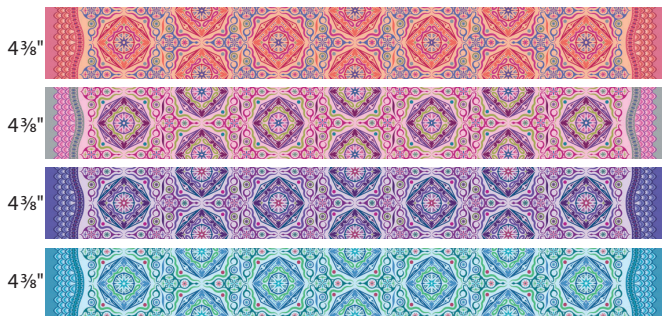
*Yardages are based on 42" of usable fabric width. Cutting sizes include ¼" seam allowances.*

## CUTTING

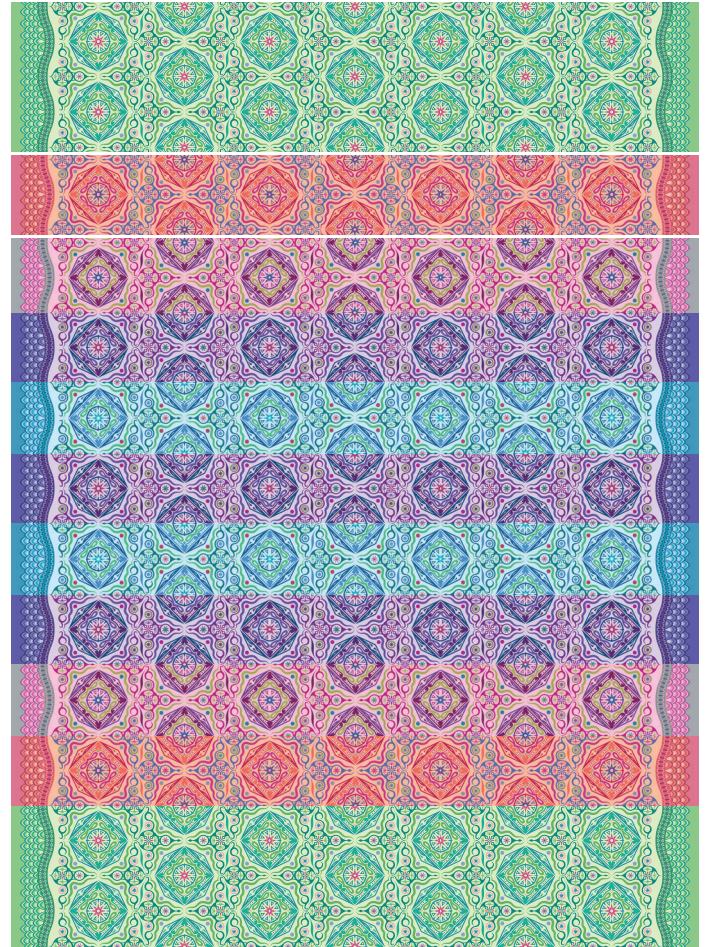
1. Spread open the green Magic Carpet print. Find the row of three motifs and mark a line from selvage to selvage, ¼" above the center of the motifs as shown. Move down to the third row of three motifs and mark a second line ¼" below the center of the motifs. Cut along the marked lines. The resulting piece will be *approximately 8¾"* high. Repeat to cut one more green piece. There's no need to trim off the selvages until after the pieced top is quilted.



2. Cut 2 orange, 2 pink, 3 lavender and 2 blue pieces from the other colorways using the same method, but this time spanning just *one* row, approximately 4¾" high as shown.



## ASSEMBLY



## MAKING

1. Align and pin strips row by row at the center of the motifs following the layout above. Sew carefully through the centers.
2. Press seams open.
3. Layer pieced top, batting and backing.
4. Baste, then quilt. We quilted a freeform wave pattern.
5. Trim selvages and finish with your preferred binding method.