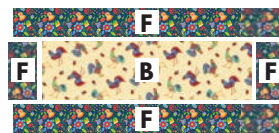


### BLOCK 3 ASSEMBLY

**10** Sew (1) F  $3\frac{1}{2}$ " x  $6\frac{1}{2}$ " strip to each side of (1) B  $6\frac{1}{2}$ " x  $22\frac{1}{2}$ " rectangle. Then sew (1) F  $3\frac{1}{2}$ " x  $28\frac{1}{2}$ " strip to the top and bottom of sewn unit. Square to  $12\frac{1}{2}$ " x  $28\frac{1}{2}$ ".  
*Make 2.*



Block 3 (Make 2)

**BORDERED PANEL** \*Note: Measure Panel first, then adjust size of strips so Bordered Panel is  $28\frac{1}{2}$ " x  $48\frac{1}{2}$ "

**11** PANEL BORDER: Sew (1) I  $3$ " x  $(41\frac{1}{2})$ " strip to each side of A panel.

**12** PANEL BORDER: Sew (1) I  $4$ " x  $(28\frac{1}{2})$ " strip to top and bottom of A panel.

### QUILT CENTER ASSEMBLY

**13** Sew blocks together in rows, then sew to each side of quilt center, then to top and bottom of quilt center.

### BORDER ASSEMBLY

Measure width and length of the quilt top to ensure border sizes, below are our cutting sizes.

**14** INNER BORDER: Sew (1) I  $2\frac{1}{2}$ " x  $(72\frac{1}{2})$ " strip to each side of quilt center.

**15** INNER BORDER: Sew (1) I  $2\frac{1}{2}$ " x  $(56\frac{1}{2})$ " strip to top and bottom of quilt center.

**16** OUTER BORDER: Sew (1) D  $4\frac{1}{2}$ " x  $(76\frac{1}{2})$ " strip to each side of quilt center.

**17** OUTER BORDER:

Sew (1) D  $4\frac{1}{2}$ " x  $(64\frac{1}{2})$ " strip to top and bottom of quilt center.

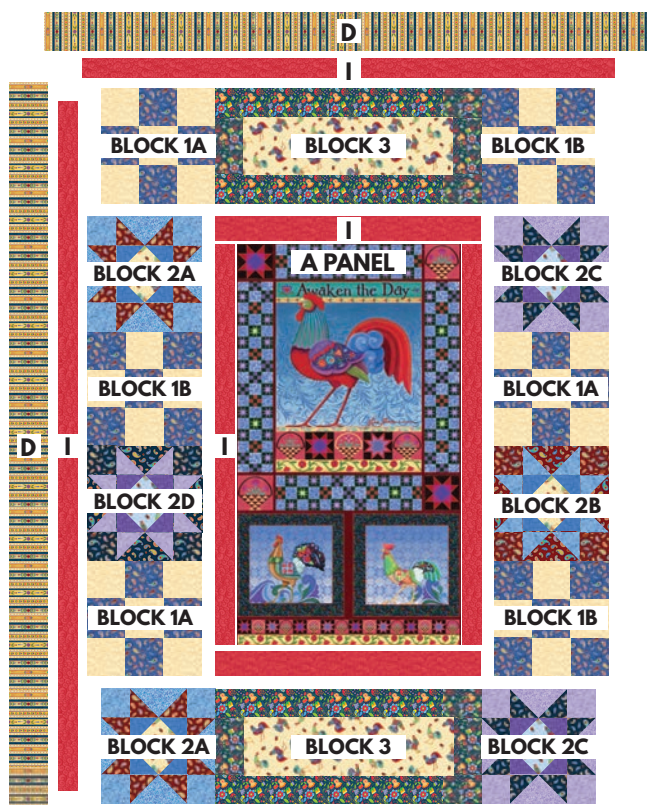
**FINISHING:** Cut batting and backing 3" larger than top on all sides. Layer backing, batting and top together and baste or pin. When quilting is completed, trim excess batting and backing. Bind as usual.

**NOTE:** If this Benartex pattern is included in a kit, any questions about the kit should be addressed to the vendor from whom you bought it.

Share your finished quilt with the Benartex community on social media by tagging #benartexfabrics!

© 2018 BENARTEX, LLC

### QUILT DIAGRAM (FINISHED SIZE: 64" X 84")



free pattern

# Rise & Shine



- DESIGNED BY BENARTEX
- FINISHED SIZE: 64" X 84"

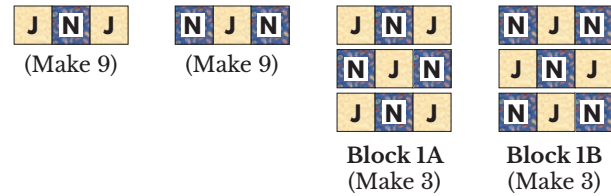
Awaken the Day  
 By JIM SHORE



CUTTING INSTRUCTIONS			
<i>WOF = Width of fabric   HST = Half Square Triangle</i> <i>*Sew strips via short ends, then subcut as indicated</i>			
<b>A AWAKEN THE DAY</b> PANEL 7580-99 Multi	1 Panel	Trim to 23½" x 41½"	
<b>B TOSSED ROOSTERS</b> 7581-30 Honey	½ yd	(2) 6½" x WOF strips, subcut (3) 6½" squares (2) 6½" x 22½"	
<b>C TOSSED ROOSTERS</b> 7581-50 Lt Blue	1 FQ	(3) 6½" squares	
<b>D COUNTRY STRIPE</b> 7582-52 Blue/Multi	1⅛ yd	(8) 4½" x WOF strips; Outer Border	
<b>E FOLKY FLORAL</b> 7583-12 Black/Multi	⅝ yd	(8) 2¼" x WOF strips; Binding	
<b>F FOLKY FLORAL</b> 7583-52 Blue/Multi	½ yd	(4) 3½" x WOF strips, subcut (4) 3½" x 6½" strips (4) 3½" x 28½" strips	
<b>G PAINTERLY SWIRL</b> 7584-53 Med Blue	⅓ yd	(3) 3½" x WOF strips, subcut (16) 3½" squares (8) 3½" x 6½" strips	
<b>H PAINTERLY SWIRL</b> 7584-60 Lt Purple	⅓ yd	See G	
<b>I SWIRLS</b> 7585-10 Red <i>*Note: Measure Panel first, then adjust size of strips so Bordered Panel is 28½" x 48½"</i>	⅞ yd	(2) 4" x WOF strips; <i>Panel Borders</i> (2) 3" x WOF strips; <i>Panel Borders</i> (7) 2½" x WOF strips; <i>Inner Borders</i>	
<b>J SWIRLS</b> 7585-30 Honey	⅝ yd	(4) 4½" x WOF strips, subcut (27) 4½" squares	
<b>K SWIRLS</b> 7585-54 Royal Blue	1 FQ	(12) 3½" squares	
<b>L SWIRLS</b> 7585-66 Purple	1 FQ	See K	
<b>M COUNTRY PAISLEY</b> 7586-19 Dk Red	⅓ yd	(3) 3½" x WOF strips, subcut (20) 3½" squares (4) 3½" x 6½" strips	
<b>N COUNTRY PAISLEY</b> 7586-54 Royal Blue	⅝ yd	See J	
<b>O COUNTRY PAISLEY</b> 7586-55 Navy	⅓ yd	See M	

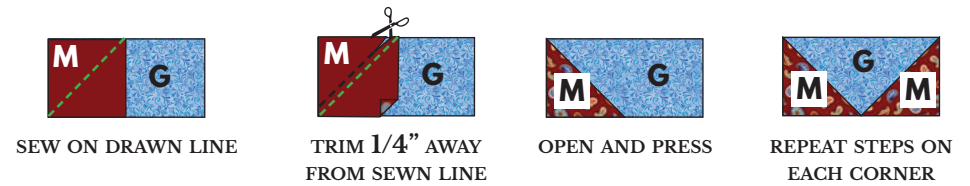
## BLOCK 1 ASSEMBLY

- 1 JNJ Unit:** Sew (1) J 4½" square to each side of (1) N 4½" square. *Make 9.*
- 2 NJN Unit:** Sew (1) N 4½" square to each side of (1) J 4½" square. *Make 9.*
- 3** Sew rows together, as shown in **Block 1A** and **Block 1B** diagrams. Square to 12½". *Make 3 Block 1As and 3 Block 1Bs.*

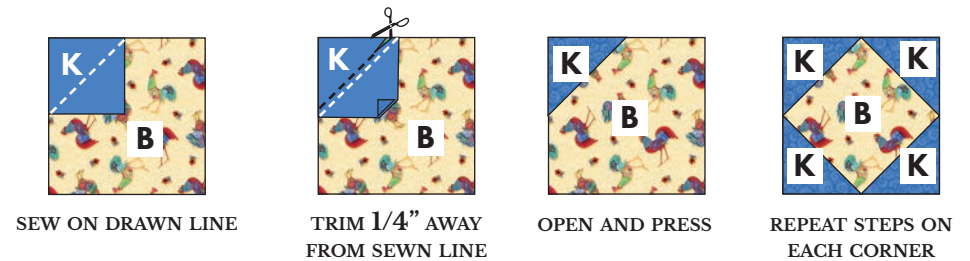


## BLOCK 2 ASSEMBLY

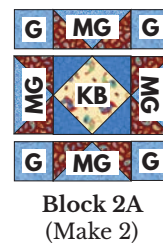
- 4** Draw a diagonal line on the wrong side of (1) M 3½" square. Place square, right sides together, at a corner of (1) G 3½" x 6½" rectangle. Sew on drawn line. Trim ¼" away from sewn line. Open and press to reveal M corner triangle. Repeat with another M 3½" square on the opposite side of G rectangle to complete MG Flying Geese Unit. *Make 8.*



- 5** Draw a diagonal line on the wrong side of (1) K 3½" square. Place square, right sides together, at a corner of (1) B 6½" square. Sew on drawn line. Trim ¼" away from sewn line. Open and press to reveal K corner triangle. Repeat with another K 3½" square on each corner of B square to complete KB Unit. *Make 3.*



- 6** Sew (1) G 3½" square to each side of (1) MG Flying Geese Unit. *Make 4.*
- 7** Sew (1) MG Flying Geese Unit to each side of (1) KB Unit. *Make 2.*
- 8** Sew rows together, as shown. Square to 12½". *Make 2.*



- 9** Repeat Steps 4-8 to make the following blocks.

