

free pattern

# Signs of Spring

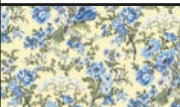
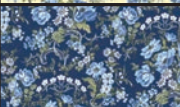











- DESIGNED BY BENARTEX
- FINISHED SIZE: 58" X 73"

*Gabrielle* Benartex  
Fabric for quilters. By quilters.

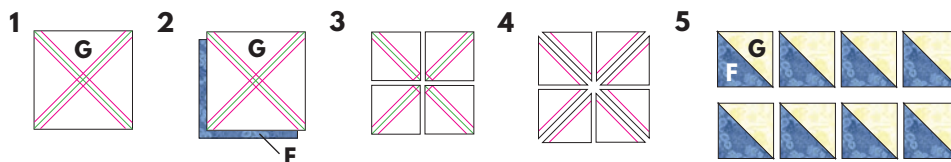
## CUTTING INSTRUCTIONS

*WOF = Width of fabric | HST = Half Square Triangle | \*Sew strips via short ends, then subcut as indicated*

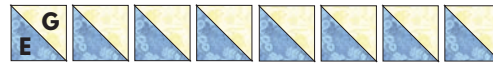
	<b>A</b>	<b>GABRIELLE BOUQUET FLOWERS</b> 4220-33 Yellow	5/8 yd	(2) 10-1/2" x WOF strips, subcut (6) 10-1/2" squares
	<b>B</b>	<b>GABRIELLE BOUQUET FLOWERS</b> 4220-55 Blue	5/8 yd	See A
	<b>C</b>	<b>GABRIELLE STRIPE</b> 4221-33 Yellow	1 yd	(7) 4-1/2" x WOF strips*; <i>Outer Mitered Border</i>
	<b>D</b>	<b>GABRIELLE NOUVEAU</b> 4222-05 Lt Blue	3/4 yd	(8) 3" x WOF strips, subcut (24) 3" x 10-1/2" strips
	<b>E</b>	<b>GABRIELLE NOUVEAU</b> 4222-50 Sky Blue	1/4 yd	(1) 6-3/4" x WOF strip, subcut (6) 6-3/4" squares, cut using "8-at-a-time triangle square unit method", yielding (48) HST
	<b>F</b>	<b>GABRIELLE NOUVEAU</b> 4222-52 Med Blue	1/4 yd	See E
	<b>G</b>	<b>GABRIELLE PAISLEY</b> 4223-03 Lt Yellow	5/8 yd	(2) 3" x WOF strips, subcut (24) 3" squares (2) 6-3/4" x WOF strips, subcut (12) 6-3/4" squares, cut using "8-at-a-time triangle square unit method", yielding (96) HST
	<b>H</b>	<b>GABRIELLE FOULARD</b> 4224-33 Yellow	2/3 yd	(4) 5-1/2" x WOF strips, subcut (24) 5-1/2" squares
	<b>I</b>	<b>GABRIELLE FOULARD</b> 4224-51 Blue/White	1/4 yd	(2) 3" x WOF strips, subcut (24) 3" squares
	<b>J</b>	<b>GABRIELLE TILE</b> 4225-55 Blue	1 yd	(6) 3" x WOF strips*; <i>Inner Border</i> (7) 2-1/4" x WOF strips*; <i>Binding</i>
	<b>K</b>	<b>ASHLEY</b> 6132-53 Navy	2/3 yd	See H

### 8-AT-A-TIME TRIANGLE-SQUARE UNITS

- 1** Draw a diagonal line on the wrong side of (1) G 6-3/4" square. Draw a line 1/4" away on each side of line. Repeat for opposite diagonal.
- 2** Place G square on top of (1) F 6-3/4" square, right sides facing. Sew on both sets of drawn lines.
- 3** Cut sewn squares into (4) equal sections.
- 4** Cut between rows of stitching to make (8) Half Square Triangles (HST). Open to reveal (8) GF HST. Square to 3". Repeat Steps 1-4 to make a total of (48) GF HST units.

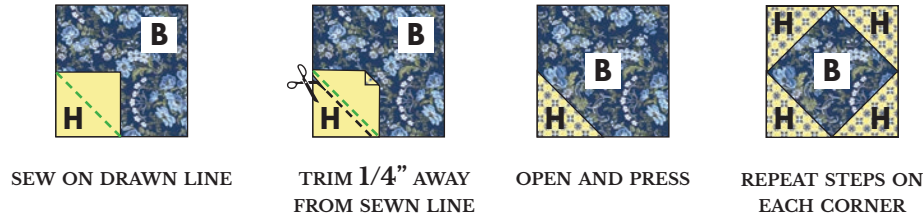


5 Repeat Steps 1-4 to make (48) GE HST units.



## SNOWBALL UNIT

6 Draw a diagonal line on the wrong side of (1) H 5-1/2" square. Place square, right sides together, at a corner of (1) B 10-1/2" square. Sew on drawn line. Trim 1/4" away from sewn line. Open and press to reveal H corner triangle. Repeat with a H 5-1/2" square on each corner of B square to complete BH Unit. *Make 6.*



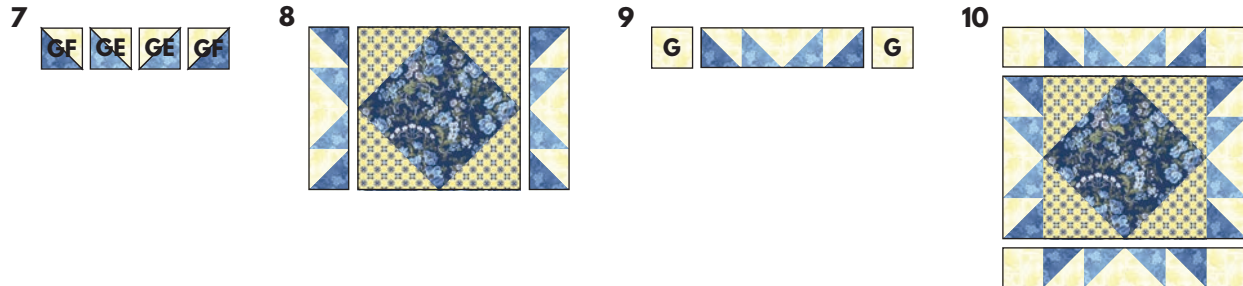
## BLOCK 1 ASSEMBLY

7 Sew GF and GE units together in a row, as shown. *Make 24.*

8 Sew (1) strip to each side of (1) Snowball unit. *Make 6.*

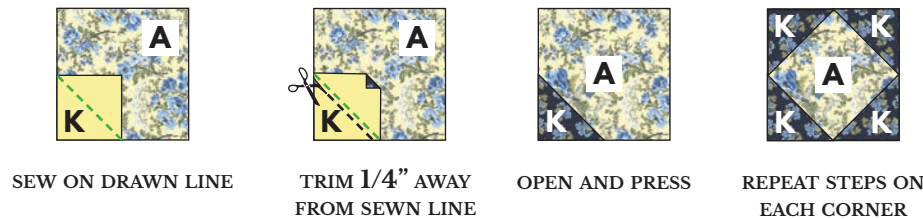
9 Sew (1) G 3" square to each side of (12) remaining strips.

10 Sew (1) strip to top and bottom of sewn units to complete Block 1. Square to 15-1/2". *Make 6.*



## BLOCK 2 ASSEMBLY

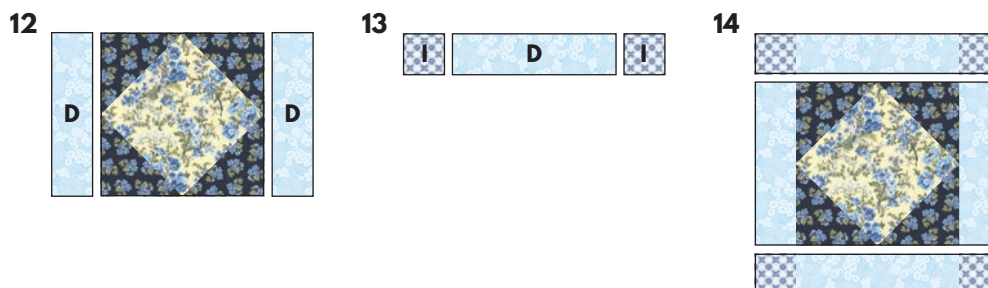
11 Repeat Step 6 with (1) A 10-1/2" square and (4) K 5-1/2" squares. *Make 6.*



12 Sew (1) D 3" x 10-1/2" strip to each side of AK Snowball unit.

13 Sew (1) I 3" square to each side of (12) remaining D 3" x 10-1/2" strips.

14 Sew (1) strip to top and bottom of sewn units to complete Block 2. Square to 15-1/2". *Make 6.*



## QUILT CENTER ASSEMBLY

15 Sew blocks together, as shown. Sew rows together.

## BORDER ASSEMBLY

Measure width and length of the quilt top to ensure border sizes, below are our cutting sizes.

16 INNER BORDER: Sew (1) J 3" x (60-1/2") strip to each side of quilt center.

17 INNER BORDER: Sew (1) J 3" x (50-1/2") strip to top and bottom of quilt center.

18 MITERED BORDER: Center (1) C 4-1/2" x (79-1/2") strip on (1) side of the quilt top and pin in place. Start sewing the stripe a 1/4" from the top edge of the quilt top and stop a 1/4" from the bottom edge. DO NOT TRIM THE EXCESS. Repeat with the opposite side.

19 Repeat Step 18 to sew (1) C 4-1/2" x (58-1/2") strip to the top and bottom of the quilt top, making sure to stop and start 1/4" away from each end of the quilt top. To miter each corner, fold the quilt top on a diagonal, wrong sides together. This should line up with the strips from the adjacent sides.

20 Starting at the sewn seam, draw a 45-degree line to the edge of the fabric. Sew on the drawn line. Trim the excess fabric leaving a 1/4" seam. Repeat this step with the remaining corners.

**FINISHING:** Cut batting and backing 3" larger than top on all sides. Layer backing, batting and top together and baste or pin. When quilting is completed, trim excess batting and backing. Bind as usual.

**NOTE:** If this Benartex pattern is included in a kit, any questions about the kit should be addressed to the vendor from whom you bought it.



Share your finished quilt with the Benartex community on social media by tagging [#benartexfabrics!](https://www.instagram.com/benartexfabrics)

BENARTEX, LLC • 132 WEST 36TH ST, 4TH FLOOR NEW YORK, NY 10018 • 212-840-3250 • [BENARTEX.COM](http://BENARTEX.COM)