

## QUILT ASSEMBLY:

5. Sew **0** 6 ½" squares to left and right side of both the **Top Border** and **Bottom Border**.
6. Sew (1) **Side Border** to the left and (1) to the right of Quilt Center. *(Note the rotation)*
7. Sew the **Top Border** to the top and then sew the **Bottom Border** to the bottom of Quilt Center to complete quilt. *(Note the rotation)*

## QUILT DIAGRAM



**FINISHING :** Cut batting and backing 3" larger than top on all sides. Layer backing, batting and top together and baste or pin. When quilting is completed, trim excess batting and backing. Bind as usual.

*Finished Quilt Size: 42 ¼" W x 57 ½"L*

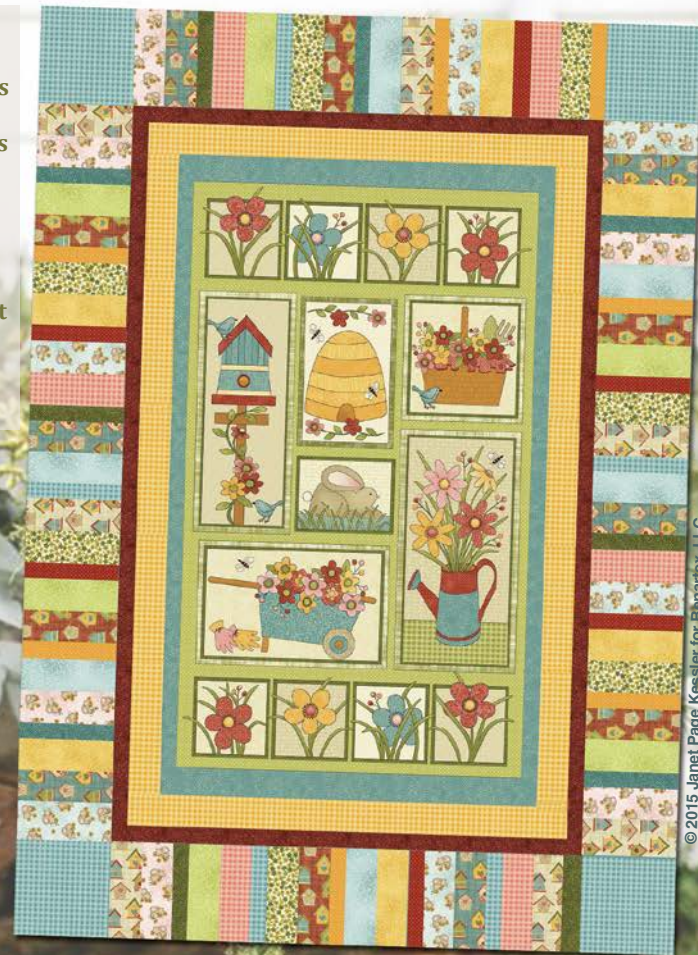
*Note: If this Benartex pattern is included in a kit, any questions about the kit should be addressed to the vendor from whom you bought it.*

# Garden Delights

Designed by  
Janet Page Kessler

Uses Benartex's  
Garden Days collection  
by Cheryl Haynes  
Finished Size: 42" x 60"

This pattern just shouts Spring! Using the Garden Days panel as the focal point, the other prints really complement around the whole quilt. Baby bunnies, bird houses, colorful dots and texture prints. Perfect for display to start off the Spring Season!



**Benartex**  
Fabric for quilters. By quilters.

SAMPLE	KEY/SKU	QTY	CUT
A	Garden Days Panel 10070-99 <i>Multi</i>	1 Panel	(1) Panel (Trim to 23 3/8" x 40 1/2")
B	Gingham 10073-33 <i>Yellow</i>	3/8 YD	(2) 2 1/2" x 28 3/4" strips* <i>Inner Border 1</i> (2) 3 1/8" x 40 1/2" strips* <i>Inner Border 1</i>
C	Bouquet 10076-10 <i>Dark Blue</i>	1/4 YD	(4) 1 1/2" x WOF strips, subcut (2) 1 1/2" x 30 3/4" strips* <i>Inner Border 2</i> (2) 1 1/2" x 44 1/2" strips* <i>Inner Border 2</i>
D	Spring Bunny 10074-01 <i>Light Pink</i>	1/8 YD	(1) 2 1/2" x WOF strip, subcut (6) 2 1/2" x 6 1/2" rectangles
E	Bird Houses 10071-84 <i>Teal</i>	1/4 YD	(1) 6 1/2" x WOF strip, subcut (2) 6 1/2" x 2 1/2" rectangles (1) 2 1/2" x WOF strip, subcut (4) 2 1/2" x 6 1/2" rectangles
F	Gingham 10073-01 <i>Pink</i>	1/8 YD	(1) 4 1/2" x WOF strip, subcut (6) 2 1/2" x 6 1/2" rectangles
G	Pollen 2867-04 <i>Light Green</i>	1/8 YD	(1) 2 1/2" x WOF strip, subcut (6) 2 1/2" x 6 1/2" rectangles
H	Spring Floral 10072-44 <i>Green</i>	1/4 YD	(2) 2 1/2" x WOF strip, subcut (7) 2 1/2" x 6 1/2" rectangles
I	Bird Houses 10071-10 <i>Red</i>	1/4 YD	(1) 6 1/2" x WOF strip, subcut (2) 6 1/2" x 2 1/2" rectangles (1) 2 1/2" x WOF strip, subcut (4) 2 1/2" x 6 1/2" rectangles
J	Pollen 2867-84 <i>Light Teal</i>	1/8 YD	(1) 2 1/2" x WOF strip, subcut (6) 2 1/2" x 6 1/2" rectangles
K	Bird Houses 10071-70 <i>Natural</i>	1/4 YD	(1) 6 1/2" x WOF strip, subcut (3) 6 1/2" x 2 1/2" rectangles (1) 2 1/2" x WOF strip, subcut (4) 2 1/2" x 6 1/2" rectangles
L	Spring Bunny 10074-84 <i>Light Teal</i>	1/8 YD	(1) 2 1/2" x WOF strip, subcut (6) 2 1/2" x 6 1/2" rectangles
M	Pollen 2867-33 <i>Honey</i>	1/8 YD	(1) 2 1/2" x WOF strip, subcut (6) 2 1/2" x 6 1/2" rectangles
N	Garden Tile 10076-44 <i>Dark Green</i>	1/8 YD	(1) 1 1/2" x WOF strip, subcut (5) 1 1/2" x 6 1/2" rectangles
O	Gingham 10073-84 <i>Teal</i>	2/3 YD	(1) 6 1/2" x WOF strips, subcut (4) 6 1/2" squares (5) 1 1/2" x 6 1/2" rectangles (6) 2 1/4" x WOF strips, <i>Binding</i>
P	Garden Tile 10076-84 <i>Dark Teal</i>	1/8 YD	(1) 1 1/2" x WOF strip, subcut (5) 1 1/2" x 6 1/2" rectangles
Q	Spring Dot 10075-33 <i>Gold</i>	1/8 YD	(1) 1 1/2" x WOF strip, subcut (7) 1 1/2" x 6 1/2" rectangles
R	Spring Dot 10075-10 <i>Red</i>	1/8 YD	(1) 1 1/2" x WOF strip, subcut (6) 1 1/2" x 6 1/2" rectangles

WOF = WIDTH OF FABRIC | \*SEW STRIPS VIA SHORT ENDS

### QUILT CENTER:

1. Trim panel to 23 3/8" x 40 1/2".

2. Sew **B** 3 1/8" x 40 1/2" strips to either side of **A** (23 3/8" x 40") Panel, then sew **B** 2 1/2" x 28 3/4" strips to top and bottom. Trim to fit.

3. Sew **C** 1 1/2" x 44 1/2" strips to either side of quilt center, then sew **C** 1 1/2" x 30 3/4" strips to top and bottom.

### BORDER ASSEMBLY:

4. Following the diagrams below using various 2 1/2" and 1 1/2" x 6 1/2" rectangles, create **Top and Bottom Borders**. *Make 1 Top Border and 1 Bottom Border.*

5. Following the diagrams below using various 2 1/2" and 1 1/2" x 6 1/2" rectangles, create **Side Borders**. *Make 2.*

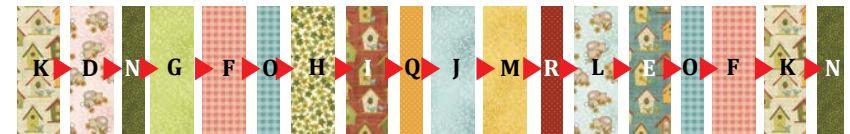
1  
& 2.



4.



**Top Border**  
*Make 1.*



**Bottom Border**  
*Make 1.*

5.



**Side Borders**  
*Make 2.*