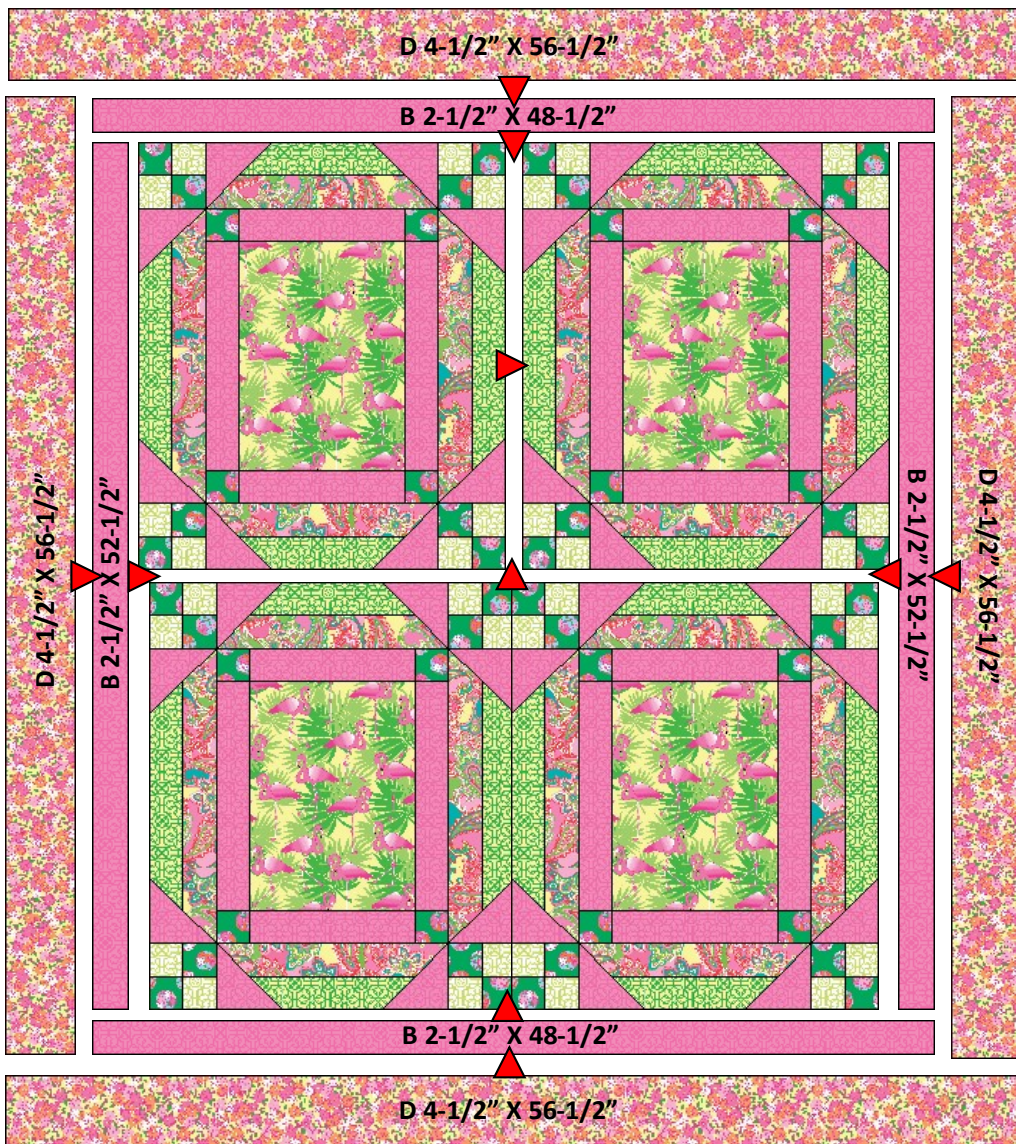


FLAMINGO CAY QUILT DIAGRAM
FINISHED SIZE: 56" X 64"



Note: If this Benartex pattern is included in a kit, any questions about the kit should be addressed to the vendor from whom you bought it.

BENARTEX, LLC • 132 WEST 36TH STREET, 4TH FLOOR

NEW YORK, NY 10018 • T:212-840-3250 • WWW.BENARTEX.COM

Flaminga Cay

Designed by Stephanie Sheridan
 and Linda Leathersich of Stitched Together Studios



© 2015 Stitched Together Studios for Benartex, LLC

The vibrant colors and playful prints in this quilt will make you feel like you are in a tropical paradise. This quilt will brighten up any room.

Uses Kanvas's
Bahama Breeze collection
 by Maria Kalinowski
 Finished Size: 56" x 64"



THE QUILT SHOWN IS A DIGITAL REPRESENTATION. ACTUAL FABRIC REPEATS WILL VARY FROM DESIGN SHOWN.

SAMPLE	KEY/SKU	QTY	CUT
A	8368-09 <i>Trendy Trellis White/Lime</i>	1/4 YD	(2) 2-1/2" X WOF strips, subcut: (32) 2-1/2" squares (A1)
B	9368-22 <i>Trendy Trellis Pink/Pink</i>	2 YDS	(4) 4-1/2" X WOF strips, subcut: (32) 4-1/2" squares (B1) (6) 2-1/2" X WOF strips, subcut: (8) 2-1/2" X 14-1/2" strips (B2) (8) 2-1/2" X 10-1/2" strips (B3) (6) 2-1/2" X WOF strips *, BORDER 1 (7) 2-1/4" X WOF strips *, BINDING
C	8369-34 <i>Trendy Trellis Yellow/Green</i>	2/3 YD	(8) 2-1/2" X WOF strips, subcut: (8) 2-1/2" X 18-1/2" strips (C1) (8) 2-1/2" X 14-1/2" strips (C2)
D	8369-33 <i>Little Ditzzy Yellow</i>	1 YD	(6) 4-1/2" X WOF strips *, BORDER 2
E	8370-33 + @ <i>Pink Flamingo Yellow</i>	1 YD	(4) 10-1/2" X 14-1/2" rectangles <i>Fussy Cut</i>
F	8373-44 <i>Ditzzy Dot Green</i>	1/4 YD	(3) 2-1/2" X WOF strips, subcut: (48) 2-1/2" squares (F1)
G	8375-22 <i>Paisley Punch Pink/Coral</i>	2/3 YD	(8) 2-1/2" X WOF strips, subcut: (8) 2-1/2" X 18-1/2" strips (G1) (8) 2-1/2" X 14-1/2" strips (G2)

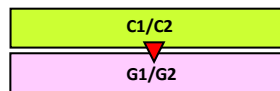
+ = EXTRA FABRIC ALLOWED FOR FUSSY CUTTING WOF=WIDTH OF FABRIC
@=DIRECTIONAL FABRIC * SEW STRIPS VIA SHORT ENDS THEN GO TO ASSEMBLY

UNIT ASSEMBLY: *Refer to UNIT DIAGRAMS.*

1. Sew (2) **A1** squares and (2) **F1** squares together as shown to create **AF Unit**. Square to 4-1/2", make (16).



2. Sew (1) **C1** strip to (1) **G1** strip. Draw diagonal line on back of (1) **B1** square. Place on one end of **CG** strip, sew on diagonal line, and press. Trim excess on reverse to 1/4". Repeat on other end to complete **CG1 Unit**, make (8).

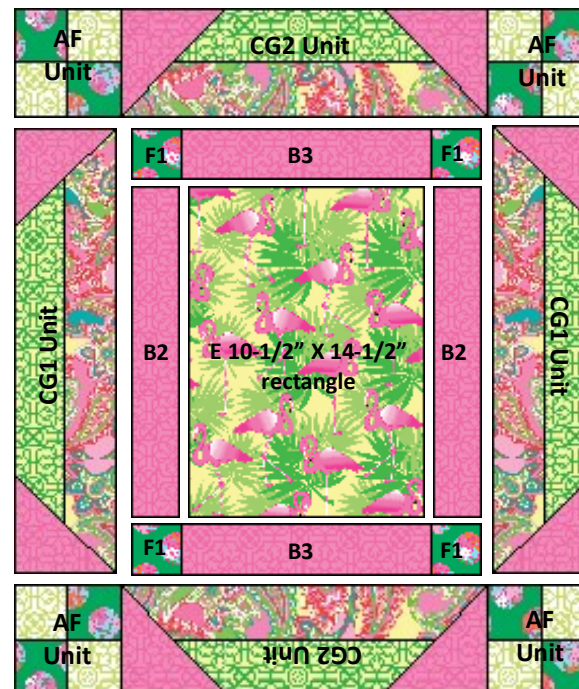


3. Sew (1) **C2** strip to (1) **G2** strip. Draw diagonal line on back of (1) **B1** square. Place on one end of **CG** strip, sew on diagonal line, and press. Trim excess on reverse to 1/4". Repeat on other end to complete **CG2 Unit**, make (8).



BLOCK ASSEMBLY: *Refer to BLOCK DIAGRAM.*

- Sew (1) **B2** strip to each side of (1) **E** 10-1/2" X 14-1/2" rectangle.
- Sew (1) **F1** square to each side of (1) **B3** strip. Make (2) then sew to top and bottom.
- Sew (1) **CG1 Unit** to each side (*note rotation of unit*).
- Sew (1) **AF Unit** to each end of (1) **CG2 Unit**. Make (2), then sew to top and bottom. Square to 22-1/2" X 26-1/2", make (4).



QUILT ASSEMBLY: *Refer to QUILT DIAGRAM*

8. Sew (4) Blocks together as shown.

BORDER ASSEMBLY: *Measure width and length of quilt top to ensure border cutting sizes. Below are our measurements.*

9. **BORDER #1:** Sew (1) **B** 2-1/2" X (52-1/2") strip to each side of quilt, then sew (1) **B** 2-1/2" X (48-1/2") strip to top and bottom.

10. **BORDER #2:** Sew (1) **D** 4-1/2" X (56-1/2") strip to each side of quilt, then sew (1) **D** 4-1/2" X (56-1/2") strip to top and bottom.

FINISHING: Cut batting and backing 3" larger than top on all sides. Layer backing, batting and top together and baste or pin. Quilt as desired. When quilting is completed, trim excess batting and backing. Bind as usual.