

© 2015 Heidi Pridemore for Benartex LLC

With peppers, tomatoes, beans, carrots and colorful stripe prints,  
Pickling Jars is an adorable mini quilt. Perfect for the kitchen!  
Will go great as a wall hanging by your food pantry!

Uses Kanvas's  
What's In My Pantry? collection  
by Maria Kalinowski  
Finished Size: 33" x 40"

THE QUILT SHOWN IS A DIGITAL REPRESENTATION. ACTUAL FABRIC REPEATS WILL VARY FROM DESIGN SHOWN.

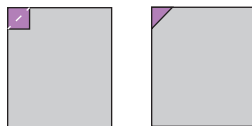
SAMPLE	KEY/SKU	QTY	CUT	CUT PIECES VIA WOF
	A Stocked Shelves 8304M-12 Black	3/4 yd	(1) 21-1/2" x WOF strip, sub-cut (1) 17-1/2" x 21-1/2" rectangle.	
	B Garden Pearls 8308-40 Pea Green	1/3 yd	(2) 2" x 21-1/2" WOF strips. (2) 2" x 20-1/2" WOF strips.	
	C Garden Pearls 8308-60 Purple	3/4 yd	(2) 2-1/2" x WOF strips, sub-cut (8) 2 1/2" x 8" strips. (2) 1-3/4" x WOF strips, sub-cut (8) 1-3/4" x 9-1/4" strips. (1) 1-1/2" x WOF strip, sub-cut (16) 1-1/2" squares. (1) 1-1/4" x WOF strip, sub-cut (16) 1-1/4" x 1-1/2" strips. (4) 2-1/2" x WOF strips, BINDING	
	D Veggie Stripe 8309-99 Multi	1/4 yd	(1) 3" x WOF strip, sub-cut (4) 3" x 8" strips. (1) 3" x WOF strip, sub-cut (4) 3" x 9-1/4" strips.	
	E Pick A Pepper 8306-12 Black	1/4 yd	(1) 6-1/4" x WOF strip, sub-cut (2) 5-1/2" x 6-1/4" rectangles.	
	F Pick A Pepper 8306-33 Yellow	1/4 yd	(1) 6-1/4" x WOF strip, sub-cut (2) 5-1/2" x 6-1/4" rectangles.	
	G Tasty Tomato 8305-12 Black	1/4 yd	(1) 6-1/4" x WOF strip, sub-cut (2) 5-1/2" x 6-1/4" rectangles.	
	H Tasty Tomato 8305-09 White	1/4 yd	(1) 6-1/4" x WOF strip, sub-cut (2) 5-1/2" x 6-1/4" rectangles.	
	I Kernels 8307-30 Maize	1/8 yd	(1) 1-1/4" x WOF strip, sub-cut (4) 1-1/4" x 3-1/2" strips.	
	J Garden Pearls 8308-28 Orange	1/8 yd	(1) 1-1/4" x WOF strip, sub-cut (4) 1-1/4" x 3-1/2" strips.	
	K Veggie Stripe 8309-40 Green	1/3 yd	(2) 2" x 37-1/2" WOF strips. (2) 2" x 33-1/2" WOF strips.	

WOF/LOF=WIDTH/LENGTH OF FABRIC

BLOCK ASSEMBLY *PROJECT USES PRECISE 1/4" SEAMS. TEST YOUR SEAM ALLOWANCE BY CUTTING (2) 2-1/2" X 5" RECTANGLES. STITCH THEM TOGETHER ALONG THE 5" LENGTH. AT THE MIDPOINT, MEASURE ACROSS THE UNIT. IT SHOULD BE EXACTLY 4-1/2" WIDE. IF NOT, ADJUST YOUR SEAM ALLOWANCE AND REPEAT.*

### BLOCKS

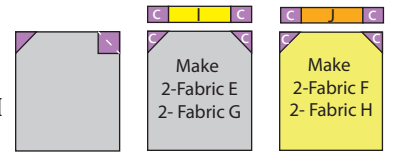
1. Place (1) C 1-1/2" square on the top left corner of (1) E 5-1/2" x 6-1/4" rectangle, right sides together. Sew across the diagonal of the small square from the upper right corner to the lower left corner. Flip open the triangle formed and press. Trim away the excess fabric from behind the triangle 1/4" away from the sewn seam.



2. Follow figure for the seam direction to add (1) C 1-1/2" square to the upper right corner of the E 5-1/2" x 6-1/4" rectangle to make (1) E Block.

BENARTEX, LLC • 132 WEST 36TH STREET, 4TH FLOOR • NEW YORK, NY 10018 • T:212-840-3250 • WWW.BENARTEX.COM

3. Repeat Steps 1-2 to make a second E Block, (2) G Blocks, (2) F Blocks and (2) H Blocks.



4. Sew (1) C 1-1/4" x 1-1/2" rectangle to each end of (1) I 1-1/4" x 3-1/2" strip to make (1) CIC strip. Repeat to make (4) CIC strips total.

5. Sew (1) C 1-1/4" x 1-1/2" rectangle to each end of (1) J 1-1/4" x 3-1/2" strip to make (1) CJC strip. Repeat to make (4) CJC strips total.

6. Sew (1) CIC strip to the tops of the (2) E Blocks and (2) G Blocks.

7. Sew (1) CJC strip to the tops of the (2) F Blocks and (2) H Blocks.

8. Sew (1) B 2" x 21-1/2" strip to each side of the A 17-1/2" x 21-1/2" rectangle. Sew (1) B 2" x 20-1/2" to the A rectangle to make the Center Block.

9. Sew (1) C 1-3/4" x 9-1/4" strip to each side of (1) D 3" x 9-1/4" strip to make (1) long CDC strip. Repeat to make (4) long CDC strips total.

10. Sew (1) C 2-1/2" x 8" strip to each side of (1) D 3" x 8" strip to make (1) short CDC strip. Repeat to make (4) short CDC strips total.

### QUILT ASSEMBLY

11. Refer to the quilt diagram to assembly the blocks to make the quilt top center.

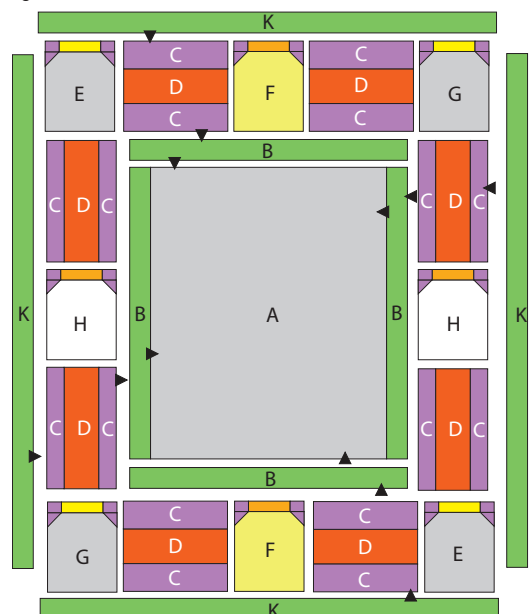
BORDER ASSEMBLY *MEASURE WIDTH AND LENGTH OF THE QUILT TOP TO ENSURE K BORDER SIZES, BELOW ARE OUR CUTTING SIZES.*

12. Sew (1) K 2" x (37-1/2") strip to each side of the quilt top. Sew (1) K 2" x (33-1/2") strip to the top and to the bottom of the quilt top.

FINISHING Cut batting and backing 3" larger than top on all sides. Layer backing, batting and top together and baste or pin. When quilting is completed, trim excess batting and backing. Bind as usual.

FINISHED SIZE: 33" X 40"

### QUILT DIAGRAM



Note: If this Benartex pattern is included in a kit, any questions about the kit should be addressed to the vendor from whom you bought it.