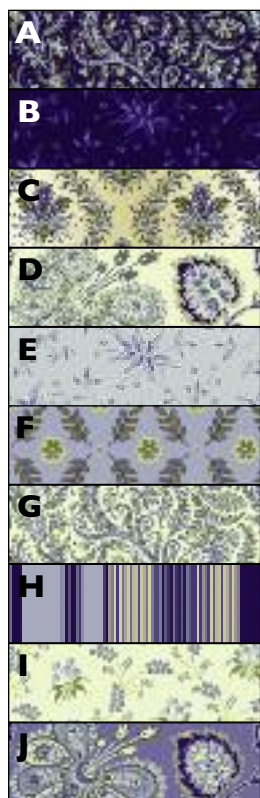




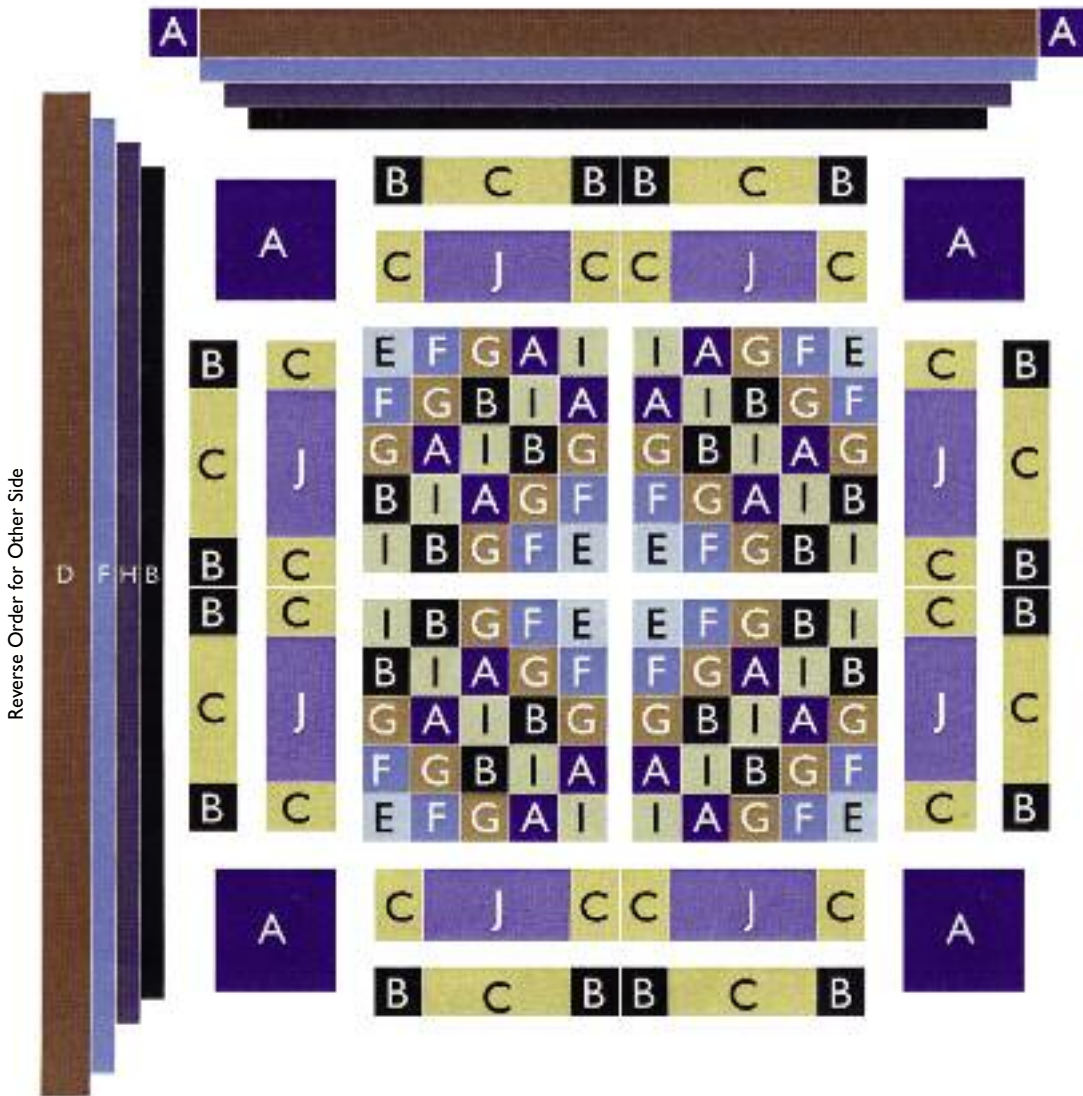
FABRIC THUMBNAIL

NAME/SKU #/COLOR QTY CUT



<b>(A)</b> Paisley 2802-58 Indigo	1/4 YD	(4) 5 1/2" squares (16) 2 1/2" squares
<b>(B)</b> La Vigna 2804-58 Indigo	1/2 YD	(32) 2 1/2" squares (2) 1 1/4" x 32" for top and bottom borders (2) 1 1/4" x 34" for side borders
<b>(C)</b> Ombre Foulard 2805-15 Ivory Azure	1/2 YD	(8) 2 1/2" x 6 1/2" strips (16) 2 1/2" x 2 1/2" strips
<b>(D)</b> Paisley Fleur 2800-15 Ivory Azure	1/3 YD	(2) 2 1/2" x 38" for top and bottom borders (2) 2 1/2" x 41" for side borders
<b>(E)</b> La Vigna 2804-05 Pale Azure	6" x 12"	(8) 2 1/2" squares
<b>(F)</b> Foulard 2808-55 Azure Blue	1/2 YD	(16) 2 1/2" squares (4) 1 3/4" x 36" for top and bottom borders (2) 1 3/4" x 38" for side borders
<b>(G)</b> Paisley 2802-15 Ivory Azure	1/4 YD	(24) 2 1/2" squares
<b>(H)</b> Awning Stripe 2806-55 Azure Multi	1/4 YD	(2) 1 1/2" x 34" strips for top and bottom borders (2) 1 1/2" x 36" strips for side borders
<b>(I)</b> Cameo Bouquet 2803-15 Ivory Azure	1/4 YD	(20) 2 1/2" squares
<b>(J)</b> Paisley Fleur 2800-55 Azure Blue	1/4 YD	(8) 6 1/2" x 3 1/2" strips

Reverse Order for Bottom

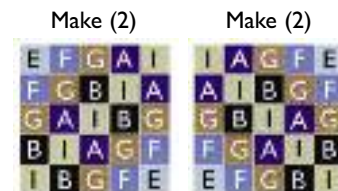


Reverse Order for Other Side

ASSEMBLY:

Please refer to diagram.

- 1 Make (4) five patch blocks as shown below:



Sew the four blocks together, to make a 20-patch center, referring to diagram for placement. **Watch the direction of your blocks!**

- 2 Make (4) CJCCJ units as shown below. Use 2 1/2" squares and 6 1/2" rectangles, following diagram.



- 3 Make (4) BCBB unit as shown below. Use 2 1/2" squares and 6 1/2" rectangles as above, following diagram.



- 4 Sew strips from 2 & 3 together to form (4) CJCCJ/BCBB units. Then sew one unit to each side of 20 patch center



- 5 Add (I) 5 1/2" A square to each end of the remaining CJCCJ/BCBB units, as shown below. Sew to top and bottom of 20-patch center.



- 6 Begin adding borders in the order shown, first to sides of quilt top, then to top and bottom of top. Begin with Border B, follow with H and F. Trim to fit after each step. Stop when you get to Border D.

- 7 Add Border D to each side of quilt top. Trim to fit. Next, add (I) 2 1/2" square to top and bottom of remaining Border D strips. Sew A-D-A strips to top and bottom of quilt top. Trim to fit. The quilt top is now finished.



- 8 Cut backing and batting 3" larger than top on all sides. Assemble the quilt "sandwich" by placing the backing, batting and top together. Baste or pin with safety pins. Machine quilt as desired. When quilting is completed, trim excess batting and bind in the usual manner.