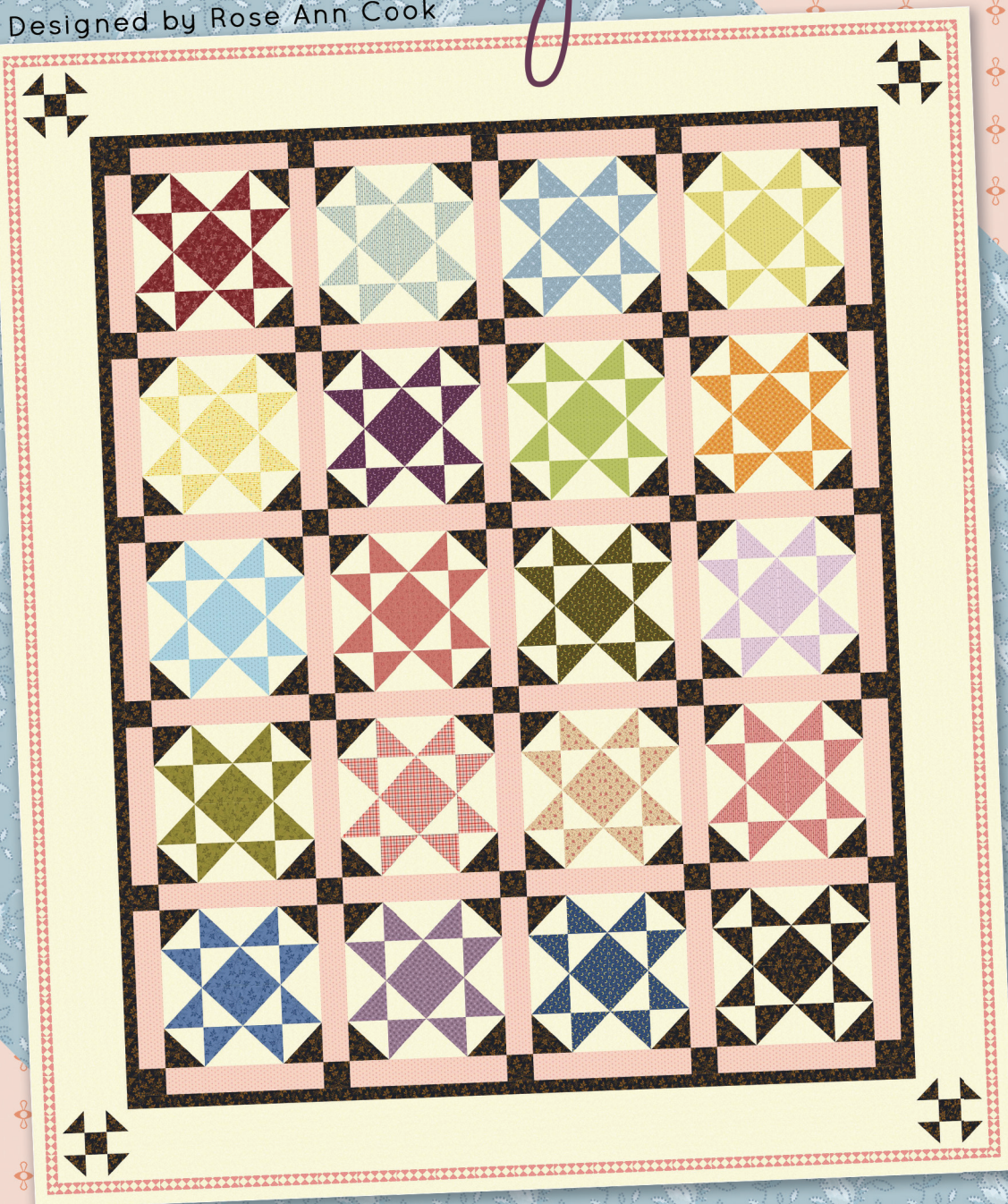


Hidden Shoo Fly

Designed by Rose Ann Cook

Finished Size: 74-1/2" x 88-1/2"



© 2017 Benartex, LLC

Traditional prints never looked so fresh and new! Rose Ann used her new "Modern Antiques" collection to create this bright and stylish Shoo Fly quilt. The classic ivory border gives this project its "modern" look, and the Shoo Fly blocks are made from 5" x 5" precuts—fun and easy! A great way to show off a time-honored collection. Add sparkle to your home—create a Shoo Fly quilt today. Sew cool!

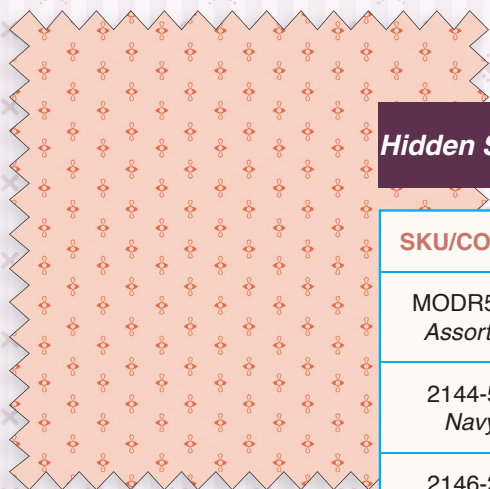
MODERN
Antiques
by Rose Ann Cook

Benartex
Fabric for quilters. By quilters.

THE QUILT SHOWN IS A DIGITAL REPRESENTATION. ACTUAL FABRIC REPEATS WILL VARY FROM DESIGN SHOWN.

MODERN Antiques

by Rose Ann Cook

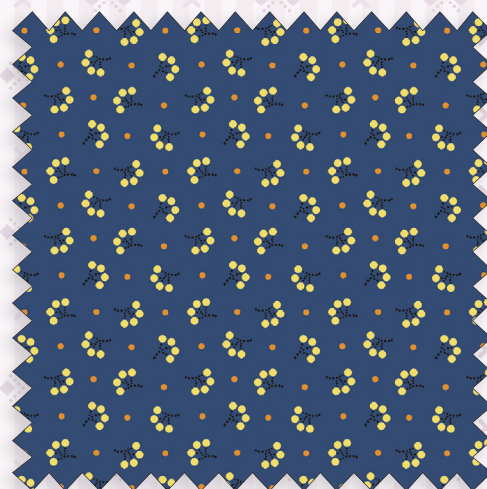


Hidden Shoo Fly by Rose Ann Cook

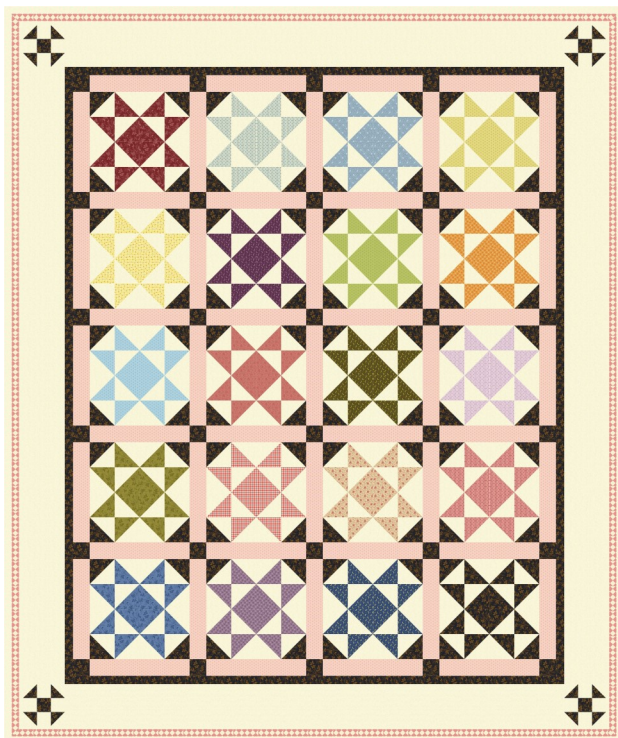
Finished Size: 74.5" x 88.5"

SKU/COLOR	DESCRIPTION	1 KIT	12 KITS	24 KITS	36 KITS
MODR5PK <i>Assorted</i>	Modern Antique 5x5 Precuts	6 Packs*	72 Packs	144 Packs	216 Packs
2144-55 <i>Navy</i>	Leaves	1-1/2 yd	18 yds 2 bolts	36 yds 3 bolts	54 yds 4 bolts
2146-26 <i>Coral</i>	Spinnings	1-1/2 yd	18 yds 2 bolts	36 yds 3 bolts	54 yds 4 bolts
2148-22 <i>Rose</i>	Borders	1 yd	12 yds 1 bolt	24 yds 2 bolts	36 yds 3 bolts
2149-07 <i>Cream</i>	Bloom	4 yds	48 yds 4 bolts	96 yds 7 bolts	144 yds 10 bolts

*Or 20 Fat Quarters



This chart is a general guide for purchasing yardage and is not intended to be used for cutting kits.
Please ask your Benartex sales representative for the final tested pattern before cutting kits.



Modern Antique Hidden Shoo Fly Quilt

Designed by Rose Ann Cook
74.5" x 88.5"

Fabric's Required:

All fabrics are from Benartex's Modern Antique

Six 5x5's of the Modern Antique Quilt fabric collection from Benartex or a fat quarter of 20 small scale fabrics

- | | |
|------------|--|
| 4 yards | Background, border - 2149-07 |
| 1 1/2 yard | Sashing - 2146-26 (soft pink print) |
| 1 1/2 yard | Cornerstones, inside border, Shoo Flys - 2144-55 (Navy leaf print) |
| 1 yard | Outside border print 2148-22
(This measurement assumes that you will piece the outside border. If you wish to avoid doing so, then you will need 2 1/2 yards of the border print and you will have lots left over!) |

CUTTING INSTRUCTIONS

TO AVOID PIECING YOUR BORDERS, I recommend that you cut them first on LOF (Length of fabric) and set aside.

Cut 4 strips - 5 1/2" x 80" Cream Background Fabric (This will give you leeway for trimming later)

Cut 4 strips - 1 1/2" x 80" Navy Leaf Print for inside border (This will give you leeway for trimming later)

Cut 4 strips - 2 1/4" x 90" FUSSY CUT the Outside border print to center fabric design in the middle of the strips.

CUTTING FOR BLOCKS

For 20 blocks (as shown in picture of quilt above), you will need to cut the following:

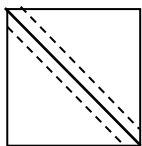
6 3 7/8" squares of each of the color fabrics that you will use for that block

160 3 7/8" squares of background fabric

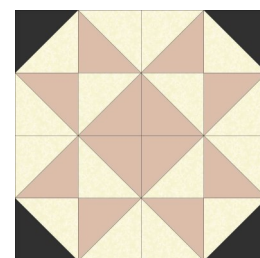
40 3 7/8" squares of the dark Shoo Fly fabric

ASSEMBLY INSTRUCTIONS:

With a fabric pencil, mark one diagonal line on all of the light background squares, from one corner to the opposite corner.



With right sides together, lay the light background square on top of one of your color squares. Sew 1/4" away from the drawn line on both sides (designated by the dotted line on the diagram at left. Cut on the solid line, press the seam allowance to the darker fabric. Repeat the process until all background/color half square triangles (HST) are completed. You need 12 background/color HSTs per block. Then repeat the process with the background fabric and the dark Shoo Fly fabric. You need 4 of those HSTs per block - (total 80 for all 20 blocks).



Referring to the picture on right, lay out your HSTs as shown. Sew the units into rows and press the seam allowance open. Lay the rows out to ensure that they are in the proper position. Sew the rows together to create the block, pinning as needed to line up the seams. Press seams open. Continue until all 20 blocks are sewn.

CUTTING INSTRUCTIONS FOR REST OF QUILT

Sashing

Cut 49 2 1/2" x 12 1/2" strips from the pink sashing fabric

Cut 30 2 1/2" squares from the Navy Leaf print Cornerstone fabric

Shoo Fly Cornerstone blocks (4)

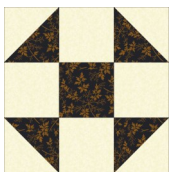
Cut 8 2 1/2" background squares (HST technique)

Cut 16 2 1/8" background squares

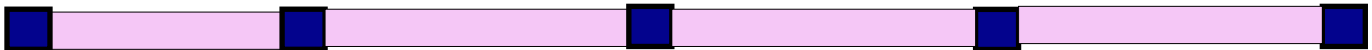
Cut 8 2 1/2" Navy Leaf print squares (HST technique)

Cut 4 2 1/8" Navy Leaf print (center of block)

ASSEMBLY INSTRUCTIONS:



Using the 2 1/2" background and dark squares and the HST technique from previous page to create 16 HSTs (4 for each block). Refer to the picture at left to lay out the units with the 2 1/8" squares. Sew the units into rows, press seam allowance to the darker fabric. Sew the rows into the Shoo Fly block. Make 4. These are the cornerstones in the border. The blocks should measure 5 1/2" unfinished.



Sash

Refer to the picture above. With right sides together, alternate a 2 1/2" cornerstone square with a pink sashing strip. Press the seam allowance to the sashing strip always. Make 6 of these. Set aside.

Refer to the photo on the front page. Sew the long edge of a sashing strip to a block, matching the corners and easing in any variances where necessary. Make 5 rows of 4 blocks with sashing in between each one. Be sure to start and stop with a sashing strip as shown in the picture. Press the seam allowances towards the sashing strips. Starting and ending with a Cornerstone/sashing strip row, alternate with the sashing/block rows. Press seam allowances to the sashing where possible to relieve bulk. This becomes your quilt center.

Measure the width of the quilt center. Cut two of your skinny first border strips to that measurement. With right sides together, sew one to the top and bottom of the quilt center. Press seam allowance to the border. Measure the height of the quilt including the newly added border. Cut the remaining two strips of the border to that measurement and sew those to the left and right sides of the quilt. Press.

Measure the new width and height the quilt center; write down those numbers. Cut two of the 5 1/2" cream border strips to the width measurement, with right sides together, sew one to the top and bottom of the quilt center. Press in the same manner as above. Cut the remaining cream border strips to the height measurement. Sew a Shoo Fly block to each end of these border strips. Sew these to the remaining sides of the quilt.

Finally, using your favorite mitering technique, sew the remaining border strips to the quilt center. Quilt as desired and enjoy!