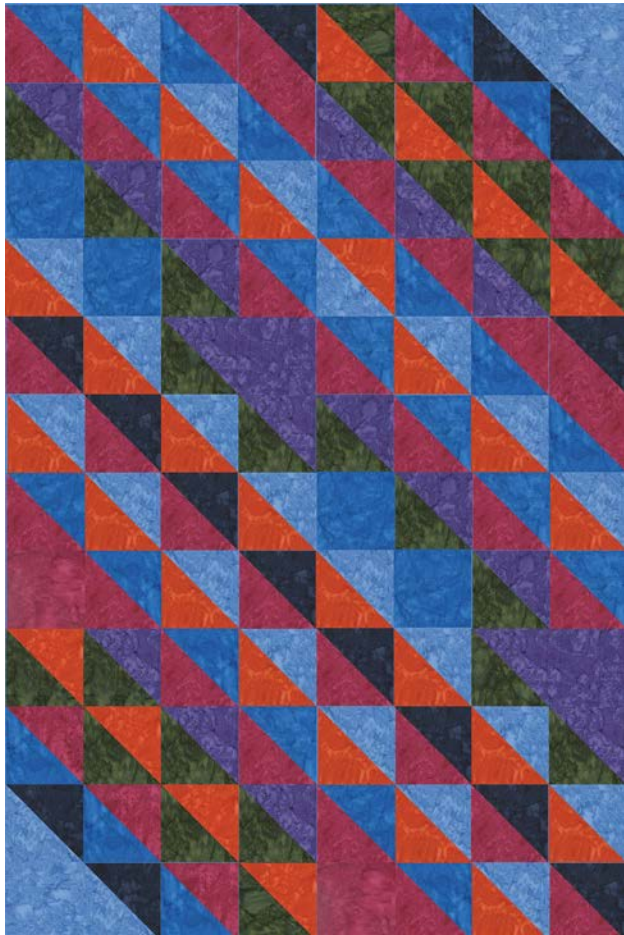


QUILT DIAGRAM



Finished Quilt Size: 40" x 60"

Note: If this Benartex pattern is included in a kit, any questions about the kit should be addressed to the vendor from whom you bought it.

Share your finished quilt with the Benartex community on social media by tagging **#benartex_fabrics!**

Also visit our Facebook Sewing Group, *Sew Interesting*.



DARK PLAINS

By Benartex Studios



Rich, deep Balis and simple blocks make a striking statement in our **Dark Plains** wallhanging.

© 2017 Benartex, LLC

Benartex
Fabric for quilters. By quilters.

Finished Size
40" x 60"



FABRIC & CUTTING INSTRUCTIONS

WOF = Width of fabric | HST = Half Square Triangle

*Sew strips via short ends, then subcut as indicated

	5/8 Yd	A STONE QUARRY 7520-26 <i>Magenta</i> (2) 5 1/2" squares (18) 5-7/8" squares, subcut diagonally to yield (36) HST's
	3/8 Yd	B STONE QUARRY 7520-44 <i>Forest</i> (12) 5-7/8" squares, subcut diagonally to yield (24) HST's
	5/8 Yd	C STONE QUARRY 7520-28 <i>Persimmon</i> (15) 5-7/8" squares, subcut diagonally to yield (30) HST's
	7/8 Yd	D STONE QUARRY 7520-50 <i>Stone Wash</i> (2) 5 1/2" squares (13) 5-7/8" squares, subcut diagonally to yield (26) HST's (5) 2-1/4" x WOF strips, <i>Binding</i>
	3/8 Yd	E STONE QUARRY 7520-66 <i>Purple</i> (2) 5 1/2" squares (8) 5-7/8" squares, subcut diagonally to yield (16) HST's
	3/8 Yd	F STONE QUARRY 7520-55 <i>Indigo</i> (7) 5-7/8" squares, subcut diagonally to yield (14) HST's
	5/8 Yd	G STONE QUARRY 7520-84 <i>Peacock</i> (4) 5 1/2" squares (13) 5-7/8" squares, subcut diagonally to yield (26) HST's

BLOCK ASSEMBLY

1. Using HST's, sew together units as shown in the diagrams below. Square blocks to 5-1/2".



QUILT CENTER ASSEMBLY

2. Sew together quilt center in rows using completed 5" Units and **A, D, E,** and **G** 5-1/2" squares. Note rotation of the units.



FINISHING

Cut batting and backing 3" larger than top on all sides. Layer backing, batting and top together and baste or pin. When quilting is completed, trim excess batting and backing. Bind as usual.