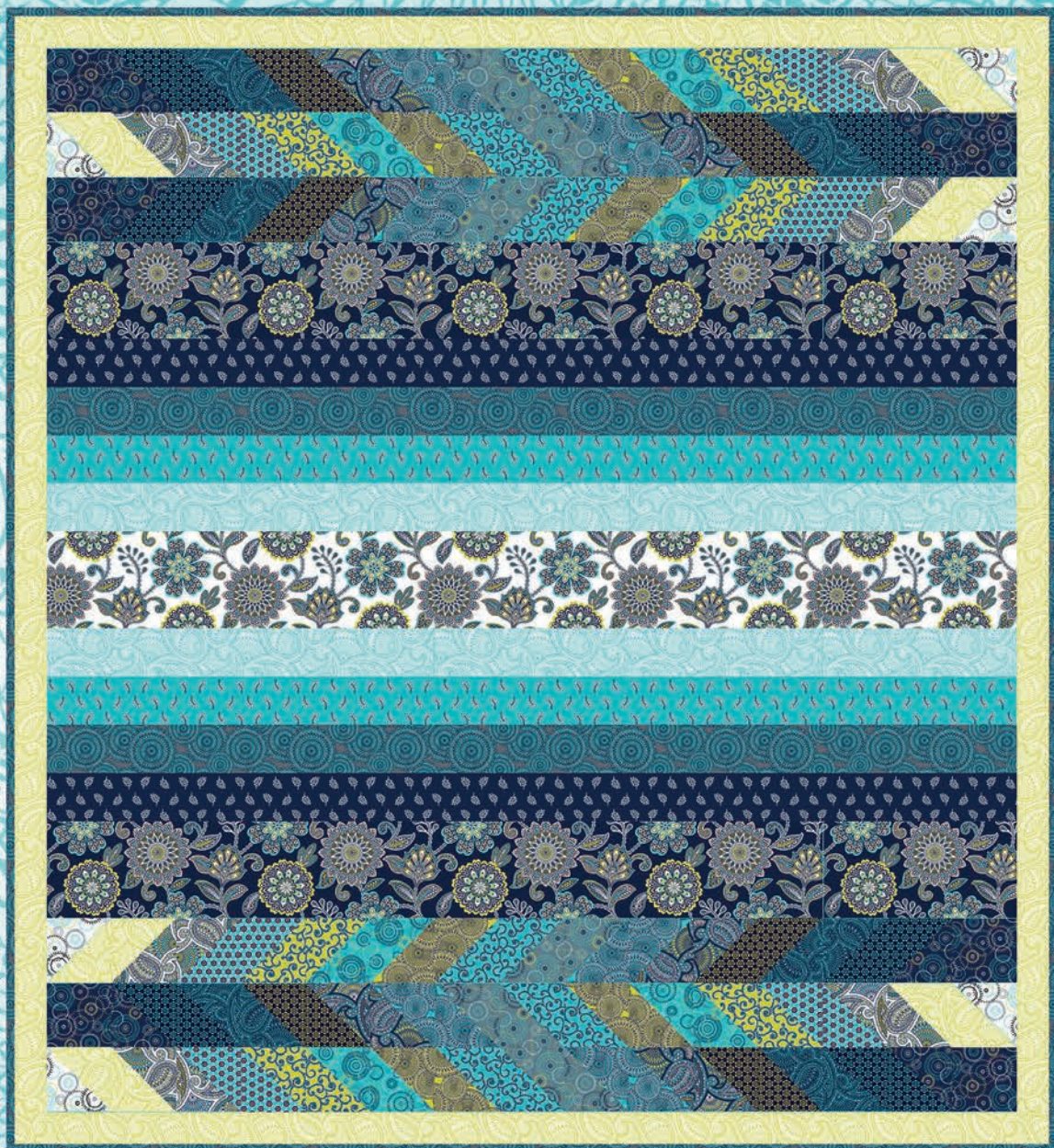


blue lagoon

Designed by Benartex Studios



© 2016 Benartex, LLC

Who knew an easy strip quilt could be so much fun!
Half square triangles and strips make a cool statement -
just perfect for the modern home.

CONTEMPO

STUDIO

Uses Contempo's
Nirvana collection by Maggie & Flo
Finished Size: 64" x 70"

THE QUILT SHOWN IS A DIGITAL REPRESENTATION. ACTUAL FABRIC REPEATS WILL VARY FROM DESIGN SHOWN.

| SAMPLE | KEY/SKU | QTY | CUT | SAMPLE | KEY/SKU | QTY | CUT |
|--------|---|--------|---|--------|---|--------|---|
| | A Nirvana Flower 5400-06 White | 1/2 yd | (2) 6-1/2" x WOF*, subcut (1) 6-1/2" x 60-1/2" strip | | L Scroll 5404-84 Turquoise | 1/4 yd | See C |
| | B Nirvana Flower 5400-55 Dark Blue | 3/4 yd | (4) 6-1/2" x WOF*, subcut (2) 6-1/2" x 60-1/2" strip | | M Star Flower 5405-44 Dark Lime | 1/4 yd | See C |
| | C Paisley 5401-09 White | 1/4 yd | (1) 5" x WOF* strip, (6) 4-7/8" squares, cut once on diagonal to yield (12) HST | | N Star Flower 5405-84 Turquoise | 1/4 yd | See C |
| | D Paisley 5401-12 Black | 1/4 yd | See C | | O Star Flower 5405-85 Dark Turquoise | 1/4 yd | See C |
| | E Tonal Paisley 5402-40 Light Lime | 2/3 yd | See C, plus: (7) 2-1/2" x WOF*, subcut; Border (2) 2-1/2" x 64-1/2" strips (2) 2-1/2" x 66-1/2" strips | | P Rings 5406-09 White | 1/4 yd | (1) 5" x WOF strip, subcut (3) 4-7/8" squares, cut once on the diagonal to yield (6) HST |
| | F Tonal Paisley 5402-55 Dark Blue | 1/4 yd | See C | | Q Rings 5406-11 Grey | 1/4 yd | See C |
| | G Tonal Paisley 5402-84 Turq/White | 1/2 yd | (4) 3-1/2" x WOF*, subcut (2) 3-1/2" x 60-1/2" strips | | R Rings 5406-55 Dark Blue | 1/3 yd | (1) 4-1/2" x WOF, subcut (6) 4-1/2" squares (1) 5" x WOF strip, subcut (3) 4-7/8" squares, cut once on the diagonal to yield (6) HST |
| | H Medallions 5403-11 Grey | 1 yd | (4) 3-1/2" x WOF*, subcut (2) 3-1/2" x 60-1/2" strips (7) 2-1/4" x WOF*; Binding | | S Rings 5406-84 Turquoise | 1/4 yd | See C |
| | I Medallions 5403-40 Lime | 1/4 yd | See C | | T Leaves 5407-55 Dark Blue | 1/2 yd | (4) 3-1/2" x WOF*, subcut (2) 3-1/2" x 60-1/2" strips |
| | J Medallions 5403-84 Turquoise | 1/4 yd | See C | | U Leaves 5407-84 Turquoise | 1/2 yd | (4) 3-1/2" x WOF*, subcut (2) 3-1/2" x 60-1/2" strips |
| | K Scroll 5404-40 Lime | 1/4 yd | See C | | | | |

WOF = WIDTH OF FABRIC | HST = HALF SQUARE TRIANGLE
*SEW STRIPS VIA SHORT ENDS, THEN SUBCUT AS INDICATED

SECTION 1 ASSEMBLY

- Sew (1) **R** HST to (1) **O** HST. Square to 4-1/2". *Make 6.*
- Repeat with remaining HST units, as shown in Pieced Row Diagram.
- Sew (1) **R** 4-1/2" square, and (1) each HST unit together in a row, as shown, to complete Pieced Row. *Make 6.*

PIECED ROW DIAGRAM



- Sew (3) Pieced Rows together, flipping the middle row, to complete Section 1. *Make 2.*

SECTION 2 ASSEMBLY

- Sew (1) **B** 6-1/2" x 60-1/2" strip, (1) **T** 3-1/2" x 60-1/2" strip, (1) **H** 3-1/2" x 60-1/2" strip, (1) **U** 3-1/2" x 60-1/2" strip, and (1) **G** 3-1/2" x 60-1/2" strip together, as shown in Quilt Diagram. *Make 2.*

QUILT CENTER ASSEMBLY

- Sew sections together along with (1) **A** 6-1/2" x 60-1/2" strip to complete Quilt Center.

BORDER ASSEMBLY

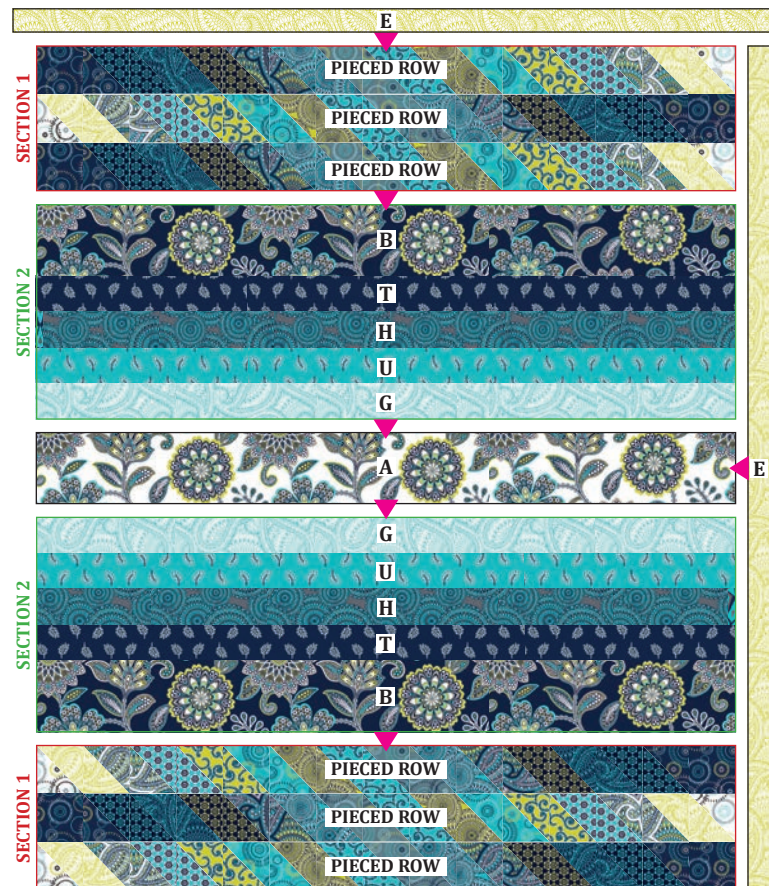
MEASURE WIDTH AND LENGTH OF THE QUILT TOP TO ENSURE BORDER SIZES, BELOW ARE OUR CUTTING SIZES.

- Sew (1) **E** 2-1/2" x (66-1/2") strip to each side of quilt top.
- Sew (1) **E** 2-1/2" x (64-1/2") strip to top and bottom of quilt top.

Finished Quilt Size: 64" W x 70" L

FINISHING: Cut batting and backing 3" larger than top on all sides. Layer backing, batting and top together and baste or pin. When quilting is completed, trim excess batting and backing. Bind as usual.

QUILT DIAGRAM



Note: If this Benartex pattern is included in a kit, any questions about the kit should be addressed to the vendor from whom you bought it.