

BRUSH DANCE FABRIC COLLECTION
DESIGNED BY SUSAN ROONEY FOR BENARTEX LLC

QUEEN SIZE QUILT 84" X 105"
WITH 12" DROP & TUCK



PANEL PLAID

QUEEN SIZE 84" X 105" WITH 12" DROP & TUCK



Brush Dance Panel - 3 yards



**column
A**

Black/Multi Floral - 3/4 yard



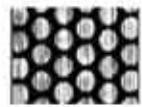
**column
G**

Ivory/Multi Floral - 1 yard



**column
E**

Ivory Basketweave
5/8 yard *Directional*



**column
i**

Black/Ivory Dot
5/8 yard *Directional*



**column
C**

Black/Lime Dot
5/8 yard *Directional*

KITS:	One	12	24	36
Brush Dance Panel 6168 -12 Black/Multi	3 yards 1 bolt	36 yards 3 bolts	72 yards 5 bolts	108 yards 8 bolts
Column A: Floral 6169 12 Black/Multi	3/4 yard 1 bolt	9 yards 1 bolt	18 yards 2 bolts	27 yards 2 bolts
Column G: Floral 6169 09 Ivory/Multi	1 yard 1 bolt	12 yards 1 bolt	24 yards 2 bolts	36 yards 3 bolts
Column E: Basketweave 6171 09 Ivory/Multi	5/8 yard 1 bolt	7 1/2 yards 1 bolt	15 yards 2 bolts	22 1/2 yards 2 bolts
Column i: Dot 6172 09 Black/Ivory	5/8 yard 1 bolt	7 1/2 yards 1 bolt	15 yards 2 bolts	22 1/2 yards 2 bolts
Column C: Dot 6172 44 Black/Lime	5/8 yard 1 bolt	7 1/2 yards 1 bolt	15 yards 2 bolts	22 1/2 yards 2 bolts
Row 6: Dot 6172 40 Lime	1/2 yard 1 bolt	6 yards 1 bolt	12 yards 1 bolt	18 yards 2 bolts
Row 4 & 10: Dot 6172 54 Black/Teal	1/2 yard 1 bolt	6 yards 1 bolt	12 yards 1 bolt	18 yards 2 bolts
Row 2 & 8: Dot 6172 55 Black/Royal	1/2 yard 1 bolt	6 yards 1 bolt	12 yards 1 bolt	18 yards 2 bolts
Row 4 & 10: Dot 6172 50 Teal	1/2 yard 1 bolt	6 yards 1 bolt	12 yards 1 bolt	18 yards 2 bolts
Row 2 & 8: Dot 6172 56 Royal	1/2 yard 1 bolt	6 yards 1 bolt	12 yards 1 bolt	18 yards 2 bolts
Basketweave 6171 Row 6 - 44 Lime Row 2 & 8 - 54 Teal Row 4 & 10 - 55 Royal Binding - 50 Teal/Lime	Fat Quarter Fat Quarter Fat Quarter 3/4 yard 1 bolt	3 yards 3 yards 3 yards 9 yards 1 bolt	6 yards 6 yards 6 yards 18 yards 2 bolts	9 yards 9 yards 9 yards 27 yards 2 bolts

1 bolt each



**row
2&8**

Black/Royal Dot
1/2 yard *Directional*



**row
4&10**

Black/Teal Dot
1/2 yard *Directional*



**row
2&8**

Royal Dot
1/2 yard *Directional*



**row
4&10**

Teal Dot
1/2 yard *Directional*

Backing & Batting
94"x 116"



**row
2&8**

Royal Basketweave
Fat Quarter *Directional*



**row
4&10**

Teal Basketweave
Fat Quarter *Directional*



**row
6**

Lime Dot
1/2 yard *Directional*



**row
6**

Lime Basketweave
Fat Quarter *Directional*

Binding - 3/4 yard



Teal/Lime
Basketweave



susanrooneypatterns.com

585.425.2464 Fairport New York

©2015 Susan Rooney All rights reserved. Written permission from Susan Rooney Design is required to copy and/or distribute copies of these pages, whether or not you profit from it. Thank you for respecting designer's copyright. My sincere gratitude to Liz Trimble for helping create this quilt & Karen Kiener for quilting it. This free pattern entitles you to make as many "Panel Plaid" quilts for your personal use, including to give as gifts. This pattern also entitles you to make up to 12 (twelve) quilts per year to sell. If you are interested in selling larger volumes, please write or call for information on licensing. Info at www.susanrooneypatterns.com.

Item # BDQfree

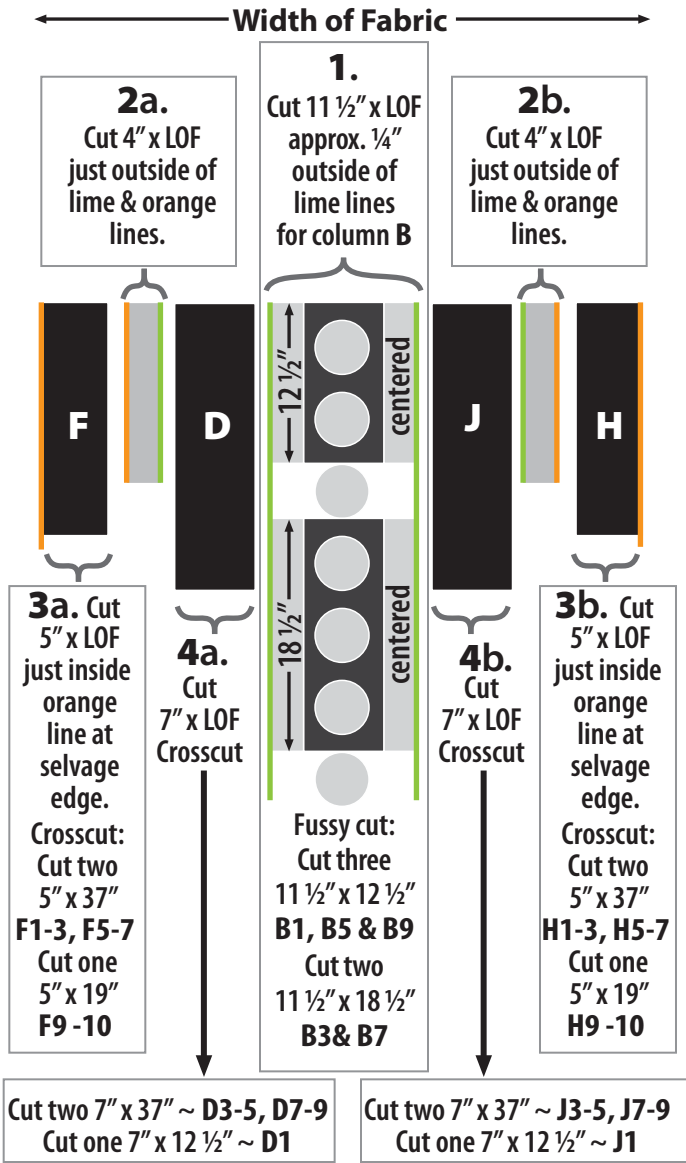
PANEL PLAID

Susan Rooney patterns

QUEEN SIZE QUILT 84" X 105" WITH 12" DROP & TUCK

CUTTING CHARTS:

3 yards of Panel = Length of Fabric (LOF)



column i

Black/Ivory Dot

5/8 yard

Directional

selvage

i3

8½" x 18½"

i7

8½" x 18½"

i1

8½" x 12½"

i5

8½" x 12½"

i9

8½" x 12½"

Cut two 8½" x 18½"

Cut three 8½" x 12½"

column C

Black/Lime Dot

5/8 yard

Directional

selvage

C3

8½" x 18½"

C7

8½" x 18½"

C1

8½" x 12½"

C5

8½" x 12½"

C9

8½" x 12½"

7" x 8½"

7" x 7"

7" x 7"

Cut two 8½" x 18½"

Cut three 8½" x 12½"

Cut one 7" x 8½" - i6

Cut two 7" x 7" - B6 & D6

row 6

Lime Dot

1/2 yard

Directional

selvage

G6

7" x 16½"

A6

7" x 12½"

C6

7" x 8½"

J6

7" x 7"

Cut one 7" x 16½"

Cut one 7" x 12½"

Cut one 7" x 8½"

Cut one 7" x 7"

row 6

Lime Basketweave Fat Quarter

Directional

selvage

E6

Cut one 6½" x 7" - E6

Cut two 2¾" x 7" - piece with B6

row 2&8

Royal Basketweave Fat Quarter

Directional

selvage

E2

E8

Cut two 6½" x 7"

Cut four 2¾" x 7" with B2 & B8

row 4&10

Teal Basketweave Fat Quarter

Directional

selvage

E4

E10

Cut two 6½" x 7"

Cut four 2¾" x 7" with B4 & B10

column A	Black/Multi Floral	3/4 yard	Cut two 12 1/2" x WOF Crosscut: two 12 1/2" x 18 1/2" ~ A3 & A7 three 12 1/2" x 12 1/2" ~ A1, A5 & A9
-----------------	--------------------	----------	---

column G	Ivory/Multi Floral	1 yard	Cut two 16 1/2" x WOF Crosscut: two 16 1/2" x 18 1/2" ~ G3 & G7 three 16 1/2" x 12 1/2" ~ G1, G5 & G9
-----------------	--------------------	--------	---


column E	selvage	E3	E7	E1	E5	E9
		6½" x 18 ½"	6½" x 18 ½"	6½" x 12 ½"	6½" x 12 ½"	6½" x 12 ½"
		Cut two 6½" x 18½"				
		Cut three 6½" x 12½"				

row 2&8	selvage	G2	B2	D2	F8
Black/Royal Dot		7" x 16 1/2"	7" x 7"	7" x 7"	7" x 5"
1/2 yard		Cut one 7" x 16 1/2"			
Directional		Cut four 7" x 7"			
		Cut two 7" x 5"			

row 2&8	selvage	G8	A2	A8	C2	i2
Royal Dot		7" x 16 1/2"	7" x 12 1/2"	7" x 12 1/2"	7" x 8 1/2"	7" x 8 1/2"
1/2 yard		Cut one 7" x 16 1/2"				
Directional		Cut two 7" x 12 1/2"				
		Cut four 7" x 8 1/2"				

row 4&10	selvage	G10	B4	D10	F4
Black/Teal Dot		7" x 16 1/2"	7" x 7"	7" x 7"	7" x 5"
1/2 yard		Cut one 7" x 16 1/2"			
Directional		Cut four 7" x 7"			
		Cut two 7" x 5"			

row 4&10	selvage	G4	A4	A10	C4	i4
Teal Dot		7" x 16 1/2"	7" x 12 1/2"	7" x 12 1/2"	7" x 8 1/2"	7" x 8 1/2"
1/2 yard		Cut one 7" x 16 1/2"				
Directional		Cut two 7" x 12 1/2"				
		Cut four 7" x 8 1/2"				

	A ▼		B ▲		C ▼	D ▲	E ▲	F ▼		G ▲		H ▲	i ▼	J ▲
1	A1 12½" x 12½"		B1 		C1 8½" x 12½"	D1 7" x 12½"	E1 6½" x 12½"			G1 16½" x 12½"			i1 8½" x 12½"	J1 7" x 12½"
2	A2 12½" x 7"	2¾" x 7"	B2 7" x 7"	2¾" x 7"	C2 8½" x 7"	D2 7" x 7"	E2 6½" x 7"			G2 16½" x 7"			i2 8½" x 7"	J2 7" x 7"
3	A3 12½" x 18½"		 B3 		C3 8½" x 18½"		E3 6½" x 18½"	F 1-3 5" x 37"		G3 16½" x 18½"		H 1-3 5" x 37"	i3 8½" x 18½"	
4	A4 12½" x 7"	2¾" x 7"	B4 7" x 7"	2¾" x 7"	C4 8½" x 7"		E4 6½" x 7"	F4 5" x 7"		G4 16½" x 7"		H4 5" x 7"	i4 8½" x 7"	J 3-5 7" x 37"
5	A5 12½" x 12½"		B5 		C5 8½" x 12½"	7" x 37"	E5 6½" x 12½"			G5 16½" x 12½"			i5 8½" x 12½"	
6	A6 12½" x 7"	2¾" x 7"	B6 7" x 7"	2¾" x 7"	C6 8½" x 7"	D6 7" x 7"	E6 6½" x 7"			G6 16½" x 7"			i6 8½" x 7"	J6 7" x 7"
7	A7 12½" x 18½"		 B7 		C7 8½" x 18½"		E7 6½" x 18½"	F 5-7 5" x 37"		G7 16½" x 18½"		H 5-7 5" x 37"	i7 8½" x 18½"	
8	A8 12½" x 7"	2¾" x 7"	B8 7" x 7"	2¾" x 7"	C8 8.5" x 7"		E8 6½" x 7"	F8 5" x 7"		G8 16½" x 7"		H8 5" x 7"	i8 8½" x 7"	J 7-9 7" x 37"
9	A9 12½" x 12½"		B9 		C9 8½" x 12½"	7" x 37"	E9 6½" x 12½"			G9 16½" x 12½"			i9 8½" x 12½"	
10	A10 12½" x 7"	2¾" x 7"	B10 7" x 7"	2¾" x 7"	C10 8½" x 7"	D10 7" x 7"	E10 6½" x 7"	F 9-10 5" x 18½"		G10 16½" x 7"		H 9-10 5" x 18½"	i10 8½" x 7"	J10 7" x 7"

With right sides together & a scant 1/4" seam allowance throughout, assemble Column B units for Row 2, 4, 6, 8, & 10 according to Diagram above. Sew each column A - J, press seams in direction of arrows at top of each column. Sew each of the columns together. Pin to batting & backing. Quilt as desired. Cut ten strips, 2 1/2" x WOF for binding. Sew binding strips into one long strip. Press in half lengthwise wrong sides together. Bind using preferred technique. *Enjoy!*