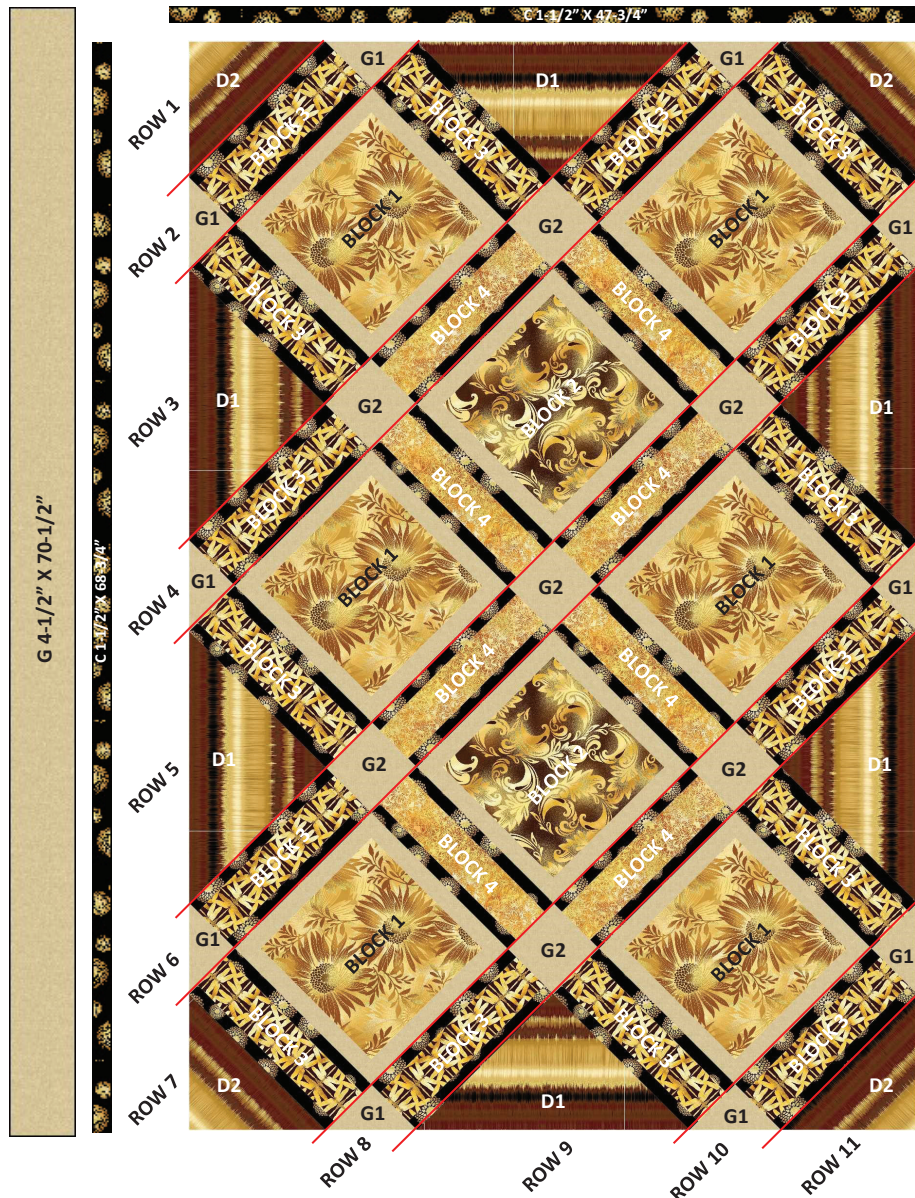


# GOLDEN VALLEY QUILT DIAGRAM

APPROXIMATE FINISHED SIZE: 55" X 77"

G 4-1/2" X 55-3/4"



*Note: If this Benartex pattern is included in a kit, any questions about the kit should be addressed to the vendor from whom you bought it.*

**BENARTEX, LLC • 132 WEST 36TH STREET, 4TH FLOOR •**  
**NEW YORK, NY 10018 •**  
**T:212-840-3250 • WWW.BENARTEX.COM**

*Golden Valley*

Designed by  
 Stephanie Sheridan &  
 Linda Leathersich of  
 Stitched Together Studios

We've combined exquisite sunflowers, touched with gold, and golden dragonflies to create this stunning collection. A textured stripe provides an extra-special finishing touch.



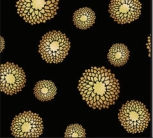
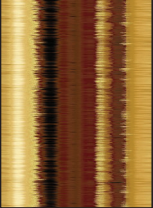



Uses Kanvas's *Sun Valley* collection  
 by Kanvas Studio  
 Finished Size: 55" x 78"

**KANVAS**  
 STUDIO

THE QUILT SHOWN IS A DIGITAL REPRESENTATION. ACTUAL FABRIC REPEATS WILL VARY FROM DESIGN SHOWN.

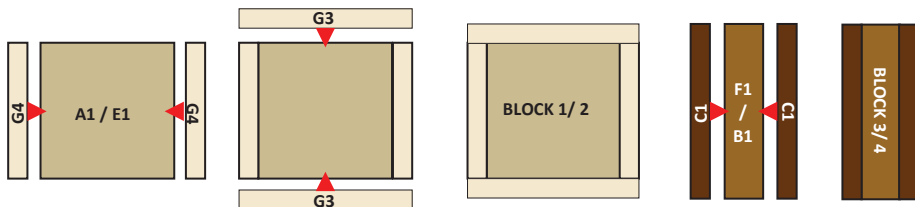
© 2017 Stitched Together Studios For Benartex, LLC



SAMPLE	KEY/SKU	QTY	CUT
	<b>A</b> Sun Dance 8648M-70 Tan	2/3 YD	(2) 10-1/2" X WOF strips, subcut: (6) 10-1/2" squares <b>A1</b>
	<b>B</b> Tumbleweed 8649M-38 Gold/Rust	1/4 YD	(3) 2-1/2" X WOF strips, subcut: (8) 2-1/2" X 12-1/2" rectangles <b>B1</b>
	<b>C</b> Seeded Dot 8652M-12 Black/Tan	1-1/2 YD	(16) 1-1/2" X WOF strips, subcut: (48) 1-1/2" X 12-1/2" rectangles <b>C1</b> (6) 1-1/2" X WOF strips * BORDER 1 (7) 2-1/4" X WOF strips * BINDING
	<b>D</b> Sunset Stripe 8653M-70 Tan  <b>@</b>	1-1/2 YD	(3) 18-1/4" squares , crosscut twice to create (6) side setting triangles (fussy cut) <b>D1</b> (2) 9-1/2" squares on point, crosscut once to create (4) corner setting trian- gles (fussy cut) <b>D2</b>
	<b>E</b> Harvest Scroll 8654M-77 Brown/Gold	1/3 YD	(1) 10-1/2" X WOF strip, subcut: (2) 10-1/2" squares <b>E1</b>
	<b>F</b> Sunset Dragonfly 8655M-77 Brown/Gold	1/2 YD	(6) 2-1/2" X WOF strips, subcut: (16) 2-1/2" X 12-1/2" rectangles <b>F1</b>
	<b>G</b> Burlap 757-71 Straw	1-3/4 YD	(1) 7" X WOF strip, subcut: (3) 7" squares, crosscut twice <b>G1</b> (1) 4-1/2" X WOF strips, subcut: (7) 4-1/2" squares <b>G2</b> (7) 4-1/2" X WOF strips * BORDER 2 (11) 1-1/2" X WOF strips, subcut: (16) 1-1/2" X 12-1/2" strips <b>G3</b> (16) 1-1/2" X 10-1/2" strips <b>G4</b>

WOF=WIDTH OF FABRIC @=DIRECTIONAL FABRIC  
 \* SEW STRIPS VIA SHORT ENDS THEN GO TO BORDER ASSEMBLY

### BLOCK DIAGRAMS



### BLOCK ASSEMBLY: *Refer to BLOCK DIAGRAMS*

**BLOCK 1:** (Square to 12-1/2", make 6)

1. Sew (1) **G4** to each side of (1) **A1**. Press, then sew (1) **G3** to top and bottom.

**BLOCK 2:** (Square to 12-1/2", make 2)

2. Sew (1) **G4** to each side of (1) **E1**. Press, then sew (1) **G3** to top and bottom.

**BLOCK 3:** (Square to 4-1/2" X 12-1/2", make 16)

3. Sew (1) **C1** to each side of (1) **F1**.

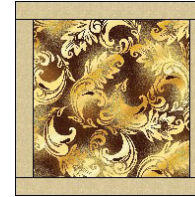
**BLOCK 4:** (Square to 4-1/2" X 12-1/2", make 8)

4. Sew (1) **C1** to each side of (1) **B1**.

**BLOCK 1 (make 6)**



**BLOCK 2 (make 2)**



**BLOCK 3 (make 16)**



**BLOCK 4 (make 8)**



### QUILT ASSEMBLY: *Refer to QUILT DIAGRAM*

7. As shown on the quilt diagram, sew the following into diagonal rows, then sew rows together. Trim to 1/4" beyond the BLOCK 3 ends. Quilt center should measure approximately 45-3/4" X 68-1/2".

ROWS 1 & 11: D2

ROWS 2 & 10: G1 - BLOCK 3 - G1

ROWS 3 & 9: D1 - BLOCK 3 - BLOCK 1 - BLOCK 3 - D1

ROWS 4 & 8: G1 - BLOCK 3 - G2 - BLOCK 4 - G2 - BLOCK 3 - G1

ROW 5: D1 - BLOCK 3 - BLOCK 1 - BLOCK 4 - BLOCK 2 - BLOCK 4 - BLOCK 1 - BLOCK 3 - D2

ROW 6: G1 - BLOCK 3 - G2 - BLOCK 4 - G2 - BLOCK 4 - G2 - BLOCK 3 - G1

ROW 7: D2 - BLOCK 3 - BLOCK 1 - BLOCK 4 - BLOCK 2 - BLOCK 4 - BLOCK 1 - BLOCK 3 - D1

**BORDER ASSEMBLY:** *Measure width and length of quilt top to ensure border cutting sizes. Below are our measurements*

8. **BORDER 1:** Sew (1) **C** 1-1/2" X (68-1/2") strip to each side of quilt, then sew (1) **C** 1-1/2" X (47-3/4") strip to top and bottom of quilt.

9. **BORDER 2:** Sew (1) **G** 4-1/2" X (70-1/2") strip to each side of quilt, then sew (1) **G** 4-1/2" X (55-3/4") strip to top and bottom of quilt.

**FINISHING:** Cut batting and backing 3" larger than top on all sides. Layer backing, batting and top together and baste or pin. Quilt as desired. When quilting is completed, trim excess batting and backing. Bind as usual.