

QUILT DIAGRAM



Finished Quilt Size: 54" x 72"

Share your finished quilt with the Benartex community on social media by tagging #benartex_fabrics!

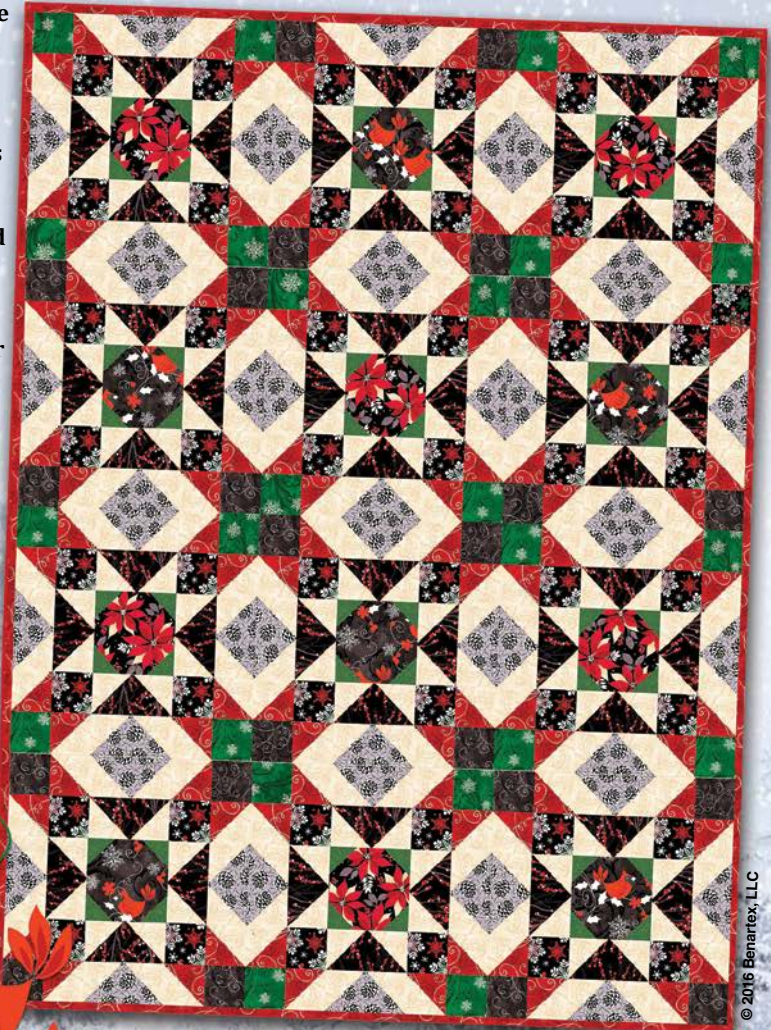
Also visit our Facebook Sewing Group, Sew Interesting.



Wintertime Cardinals

Designed by Benartex Studios

What a handsome way to celebrate the holidays! Brilliant red poinsettias and playful cardinals float among sparkling snowflakes, swirls and pinecones. The effect is magical - just perfect for any room in your home!



© 2016 Benartex, LLC



KANVAS

Uses Kanvas's
Winter Story collection
by Kanvas Studio
Finished Size: 54" x 72"

WINTER
STORY
by Kanvas Studio

THE QUILT SHOWN IS A DIGITAL REPRESENTATION. ACTUAL FABRIC REPEATS WILL VARY FROM DESIGN SHOWN.

FABRIC & CUTTING INSTRUCTIONS

WOF = Width of fabric | HST = Half Square Triangle

*Sew strips via short ends, then subcut as indicated

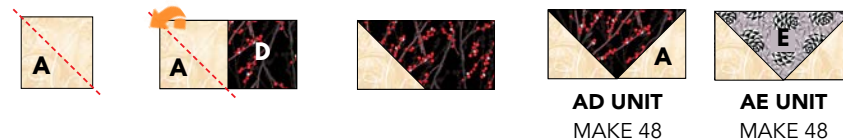
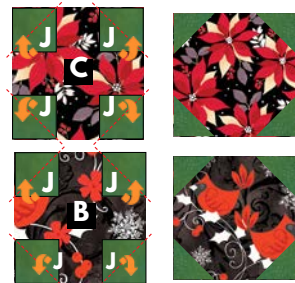
- | | | |
|--|-----------|--|
|  | 3-7/8 Yds | A VINE SCROLL 8626-07 Cream
(16) 3 1/2" x WOF strips, subcut
(192) 3 1/2" Squares
(5) 4" x WOF strips, subcut
(48) 4" Squares, cut once on diagonal |
|  | 1/4 Yd | B RED CARDINAL 8621-12 Black
(6) 6 1/2" Squares |
|  | 1/4 Yd | C POINSETTIA 8622-12 Black
(6) 6 1/2" Squares |
|  | 7/8 Yd | D WINTER BERRIES 8624-12 Black
(8) 3 1/2" x WOF strips, subcut
(48) 3 1/2" x 6 1/2" rectangles |
|  | 7/8 Yd | E WINTER PINE 8625-11 Silver
(8) 3 1/2" x WOF strips, subcut
(48) 3 1/2" x 6 1/2" rectangles |
|  | 1-1/4 Yds | F VINE SCROLL 8626-10 Red
(5) 4" x WOF strips, subcut
(48) 4" Squares, cut once on diagonal
(7) 2-1/4" x WOF strips, Binding |
|  | 1/3 Yd | G SNOWFLAKE SCROLL 8627-44 Green
(24) 3 1/2" Squares |
|  | 1/3 Yd | H PACKED SNOWFLAKE 8628-12 Black
(24) 3 1/2" Squares |
|  | 1/2 Yd | I PACKED SNOWFLAKE 8628-12 Black
(48) 3 1/2" Squares |
|  | 3/8 Yd | J BLUSH 8625-48 Emerald
(4) 3" x WOF strips, subcut
(48) 3" Squares, cut once on diagonal |

BLOCK ASSEMBLY

1. Sew (1) **J** 3" square to right corner of (1) **C** 6 1/2" square. Press open. Repeat with remaining corners as shown in the diagram to create **Block 1** Center. *Make 6.*

2. Repeat step 1 and replace **C** square with **B** square to create **Block 2** Center. *Make 6.*

3. Following the diagrams on the next page, draw a diagonal line on the **A** 3 1/2" squares. Place (1) **A** 3 1/2" square on the left side of (1) **D** 3 1/2" x 6 1/2" rectangle. Sew on the diagonal line. Press to the corner. Trim off the excess. Repeat right side of **D** rectangle to create **AD** Unit. *Make 48.* Repeat Step 3 and replace **D** rectangle with **E** rectangle to create **AE** Unit, *Make 48.*

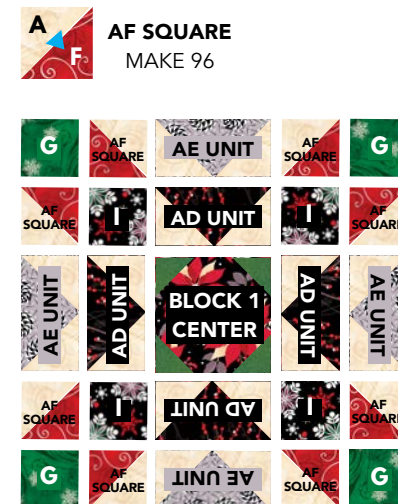
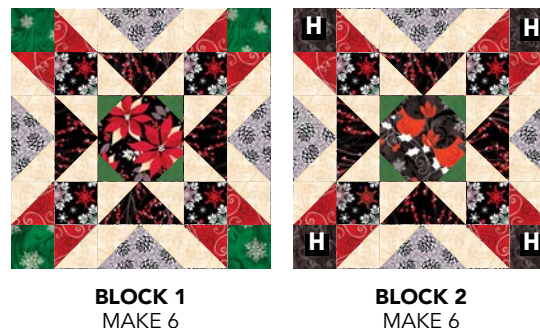


QUILT CENTER ASSEMBLY

4. Sew together **A** and **F** HST's to make **AF** Square. *Make 96 AF Squares. Square to 3-1/2".*

5. Sew together Block 1 using Block 1 Center, **AD** & **AE** Units, **AF** Squares and **G** and **I** 3-1/2" squares to create Block 1. *Square to 18-1/2". Make 6.*

6. Repeat step 5 replacing Block 1 Center with Block 2 Center and replacing **G** 3-1/2" square with **H** 3-1/2" square. *Square to 18-1/2". Make 6.*



7. Sew together Quilt following the Quilt Diagram on the last page using Blocks 1 and 2.

FINISHING

Cut batting and backing 3" larger than top on all sides. Layer backing, batting and top together and baste or pin. When quilting is completed, trim excess batting and backing. Bind as usual.

Note: If this Benartex pattern is included in a kit, any questions about the kit should be addressed to the vendor from whom you bought it.