

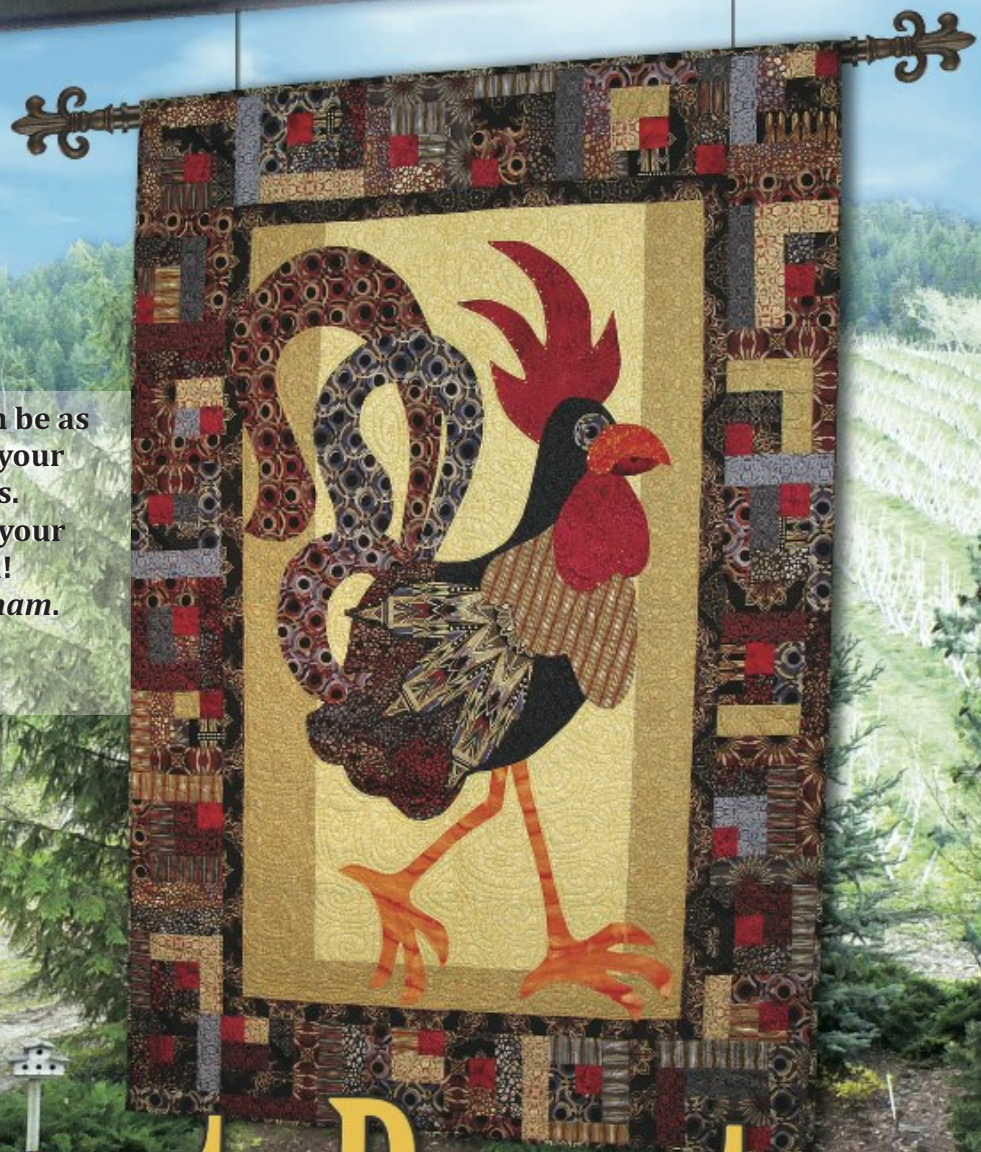
A BENARTEX PATTERN ♦ A BENARTEX PATTERN ♦ A BENARTEX PATTERN ♦ A BENARTEX PATTERN ♦ A BENARTEX PATTERN ♦ A BENARTEX PATTERN



A BENARTEX PATTERN ♦ A BENARTEX PATTERN ♦ A BENARTEX PATTERN ♦ A BENARTEX PATTERN ♦ A BENARTEX PATTERN ♦ A BENARTEX PATTERN

Your *Jaunty Rooster* can be as colorful and crazy as your imagination allows. Make changes to suit your style and have fun! Uses fabric from *Gotham*.

FINISHED SIZE: ABOUT
36" W x 45 1/2" L



Jaunty Rooster

BY Julie Lynch

Benartex
Fabric for quilters. By quilters.

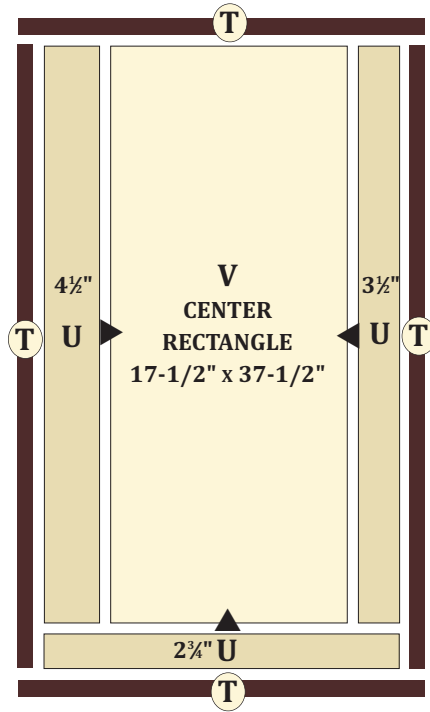
1359 Broadway, Ste. 1100 • New York, NY 10018 • 212-840-3250 • www.benartex.com

A BENARTEX PATTERN ♦ A BENARTEX PATTERN ♦ A BENARTEX PATTERN ♦ A BENARTEX PATTERN ♦ A BENARTEX PATTERN ♦ A BENARTEX PATTERN

SAMPLE	KEY SKU	QTY	CUT
	A Columbus Circle 2551-55 <i>Blue</i>	FQ	2" strips
	B Brooklyn Bridge 2552-72 <i>Rust</i>	FQ	2" strips
	C Hudson River 2553-13 <i>Dark Gray</i>	FQ	2" strips
	D Hudson River 2553-66 <i>Mauve</i>	FQ	2" strips
	E Link on Center 2554-55 <i>Blue/Brown</i>	FQ	*use left overs for log cabin. for tail
	F Link on Center 2554-72 <i>Rust</i>	FQ	*use left overs for log cabin. for tail
	G Link on Center 2554-88 <i>Multi</i>	FQ	*use left overs for log cabin. for tail
	H Rush Hour 2555-13 <i>Silver</i>	FQ	2" strips
	I Rush Hour 2555-88 <i>Multi</i>	FQ	2" strips
	J Tribeca 2556-27 <i>Cinnamon</i>	FQ	2" strips
	K Tribeca 2556-55 <i>Blue</i>	FQ	2" strips
	L Tribeca 2556-72 <i>Brown</i>	FQ	2" strips
	M Tribeca 2556-18 <i>Dark Gray</i>	FQ	2" strips
	N Fossil Fern 528-49 <i>True Red</i>	FQ	*use left overs for log cabin. for waddle and crown
	O Fossil Fern 528-68 <i>Orange Juice</i>	FQ	for legs and beak
	P Rush Hour 2555-33 <i>Gold</i>	FQ	for neck and chest
	Q Empire Star 2550-88 <i>Blue/Brown</i>	PANEL	for feathers
	R Tribeca 2556-59 <i>Navy</i>	1/2 YD	for body
	S Hudson River 2553-72 <i>Brown</i>	1/4 YD	for rear
	T Columbus Circle 2551-88 <i>Brown</i>	1/4 YD	(4) 1-1/2" x WOF for sashing.
	U Tribeca 2556-33 <i>Gold</i>	1/2 YD	(1) 4-1/2" x WOF strip. (1) 3-1/2" x WOF strip. (1) 2-3/4" x WOF strip.
	V Tribeca 2556-77 <i>Linen</i>	1/2 YD	(1) 17-1/2" x 37-1/2" rectangle.

*Cut rooster
appliqué pieces
first, then cut
log cabin 2"
strips.

Please Note: First see Jaunty Rooster Applique instructions, before working on Log Cabin Border Assembly.



Background for Jaunty Rooster Appliqué

1. Sew U 4-1/2" strip to left side of center rectangle V and a 3-1/2" strip to the right side. Trim excess fabric. Next add to bottom of V center rectangle a B 2-3/4" strip, as shown on left diagram.

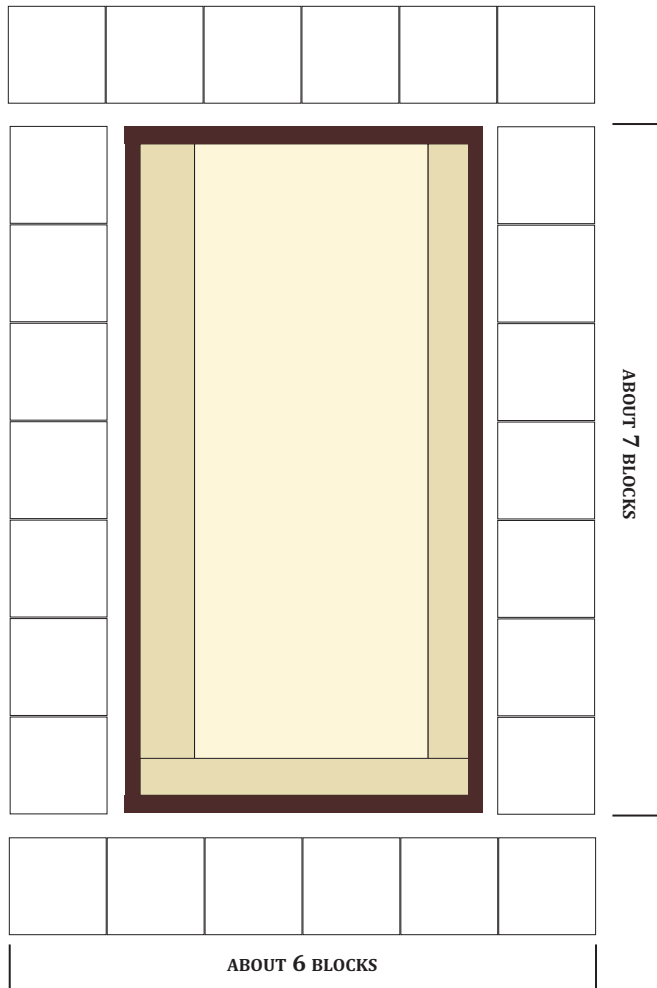
2. Sew 1-1/2" sashing border T to each side of UV center rectangle. Trim to fit. Repeat for top and bottom.

Log Cabin Border Assembly (Pieced from 2" strips and applique left overs.)

1. Begin with a 2" red square then randomly add strips, trimming as you go, making log cabin or off-set log cabin blocks. Each block is 4 strips wide and 4 strips long. Make about 26 log cabin blocks. Below is an example of how to set the 2" strips.



2. Sew 7 blocks together per side. If not quite long enough add some random strips. Make 2 rows. Sew rows to sides of quilt center. Repeat for top and bottom using 6 blocks sewn together. Trim to fit. See diagram below, left.



Jaunty Rooster Appliqué *Please read before beginning!*

You may appliqué or fuse, however, appliqué will definitely stand the test of time over fusing. Julie used an appliqué with a freezer paper method. Using a pen, trace each pattern piece on the glossy side of the freezer paper. Then cut out each pattern piece on the drawn line and number them.

Now decide which fabric to use for the piece and iron the glossy side to the wrong side of the fabric. Trim fabric 1/4" from paper and press 1/4" against paper. This is the edge you'll appliqué. Next arrange pieces and begin to appliqué using needle turn method when needed. Be sure to remove freezer paper when finishing each appliqué piece.

Remember when laying out rooster to appliqué, to place the crown under the head, the legs under the body, the waddle under the beak and so forth.

Finishing

Cut batting and backing 3" larger than top on all sides. Assemble the quilt sandwich by placing the backing, batting and top together in layers and baste or pin with safety pins. Machine quilt as desired. When quilting is completed, trim excess batting and backing. Bind in the usual manner. Embellish to your hearts content.

Finished Size: about 36" w x 45-1/4"L



**Enlarge rooster
template to 375%**